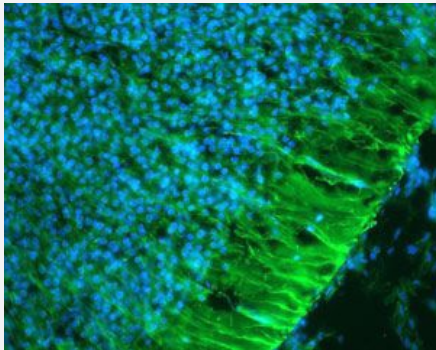


Nes polyclonal antibody

Catalog # PAB29079 Size 300 ug

Applications



Immunocytochemical staining of Nes polyclonal antibody (Cat # PAB29079) (at a concentration of 3 ug/mL).
Nes-positive neuronal stem cells (green) in ventricular zone of an e13.5 mouse brain.

Specification

Product Description	Chicken polyclonal antibody raised against recombinant Mouse Nes.
Immunogen	Three different KLH-conjugated synthetic peptides corresponding to different regions of the mouse Nes gene product (NP_057910, NCBI), shared with the rat (NM_012987, NCBI) protein sequence.
Host	Chicken
Reactivity	Mouse, Rat
Form	Liquid
Purification	Antigen affinity purification
Isotype	IgY
Quality Control Testing	Immunocytochemistry Immunocytochemical staining of Nes polyclonal antibody (Cat # PAB29079) (at a concentration of 3 ug/mL). Nes-positive neuronal stem cells (green) in ventricular zone of an e13.5 mouse brain.
Recommend Usage	Immunocytochemistry(1:10000-1:20000) Immunohistochemistry(1:10000-1:20000) Western Blot(1:20000-1:50000) The optimal working dilution should be determined by the end user.

Storage Buffer	In PBS, pH 7.2 (0.02% sodium azide)
Storage Instruction	Store at 4°C and avoid from light. Aliquot to avoid repeated freezing and thawing.
Note	This product contains sodium azide: a POISONOUS AND HAZARDOUS SUBSTANCE which should be handled by trained staff only.

Applications

- Western Blot
- Immunohistochemistry
- Immunocytochemistry

Gene Info — Nes

Entrez GeneID	18008
Protein Accession#	NP_057910
Gene Name	Nes
Gene Alias	AA166324, C78523, ESTM46
Gene Description	nestin
Gene Ontology	Hyperlink
Other Designations	intermediate filament protein

Gene Info — Nes

Entrez GeneID	25491
Protein Accession#	NP_057910
Gene Name	Nes
Gene Alias	-
Gene Description	nestin

Gene Ontology

[Hyperlink](#)

Other Designations

-