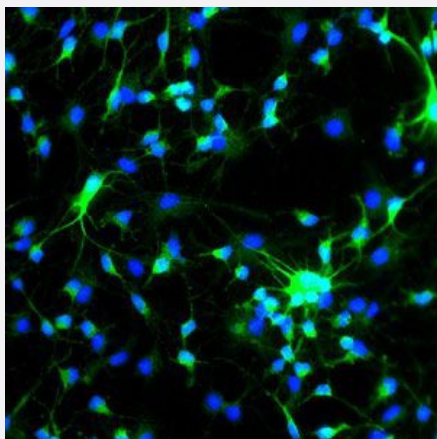


MAP2 polyclonal antibody

Catalog # PAB29077 Size 200 ug

Applications



MAP2 polyclonal antibody (Cat # PAB29077) was analyzed by immunocytochemical staining (at a dilution of 1:2000). MAP2-positive cultured neurons (green) from an e13.5 mouse brain. Nuclei are blue.

Specification

Product Description	Chicken polyclonal antibody raised against recombinant Human MAP2.
Immunogen	Two different KLH-conjugated synthetic peptides corresponding to different regions of MAP2 gene product, shared between the human (NP_002365, NCBI) and mouse (P20357, NCBI) sequences.
Host	Chicken
Reactivity	Human, Mouse
Form	Liquid
Purification	Antigen affinity purification
Isotype	IgY
Quality Control Testing	Immunocytochemistry MAP2 polyclonal antibody (Cat # PAB29077) was analyzed by immunocytochemical staining (at a dilution of 1:2000). MAP2-positive cultured neurons (green) from an e13.5 mouse brain. Nuclei are blue.

Recommend Usage	Immunocytochemistry(1:1000-1:2000) Immunohistochemistry(1:1000-1:2000) Western Blot(1:2000-1:5000) The optimal working dilution should be determined by the end user.
Storage Buffer	In PBS, pH 7.2 (0.02% sodium azide)
Storage Instruction	Store at 4°C and avoid from light. Aliquot to avoid repeated freezing and thawing.
Note	This product contains sodium azide: a POISONOUS AND HAZARDOUS SUBSTANCE which should be handled by trained staff only.

Applications

- Western Blot
- Immunohistochemistry
- Immunocytochemistry

Gene Info — MAP2

Entrez GeneID	4133
Protein Accession#	NP_002365
Gene Name	MAP2
Gene Alias	DKFZp686I2148, MAP2A, MAP2B, MAP2C
Gene Description	microtubule-associated protein 2
Omim ID	157130
Gene Ontology	Hyperlink
Gene Summary	This gene encodes a protein that belongs to the microtubule-associated protein family. The proteins of this family are thought to be involved in microtubule assembly, which is an essential step in neurogenesis. The products of similar genes in rat and mouse are neuron-specific cytoskeletal proteins that are enriched in dendrites, implicating a role in determining and stabilizing dendritic shape during neuron development. A number of alternatively spliced variants encoding distinct isoforms have been described. [provided by RefSeq]
Other Designations	OTTHUMP00000163916

Gene Info — Mtap2

Entrez GeneID	17756
Protein Accession#	NP_002365
Gene Name	Mtap2
Gene Alias	MAP-2, MAP2, Mtap-2
Gene Description	microtubule-associated protein 2
Gene Ontology	Hyperlink
Other Designations	OTTMUSP00000017688 OTTMUSP00000017689 OTTMUSP00000017691

Disease

- [Cardiovascular Diseases](#)
- [Diabetes Mellitus](#)
- [Edema](#)
- [Tobacco Use Disorder](#)