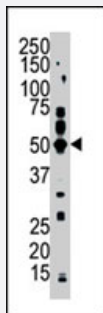


PFTK2 polyclonal antibody

Catalog # PAB2903

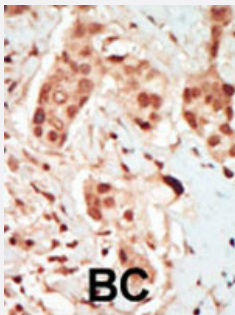
Size 400 uL

Applications



Western Blot (Tissue lysate)

Western blot analysis of PFTK2 polyclonal antibody (Cat # PAB2903) in mouse cerebellum tissue lysate. ALS2CR7 (arrow) was detected using purified polyclonal antibody. Secondary HRP-anti-rabbit was used for signal visualization with chemiluminescence.



Immunohistochemistry (Formalin/PFA-fixed paraffin-embedded sections)

Formalin-fixed and paraffin-embedded human cancer tissue reacted with PFTK2 polyclonal antibody (Cat # PAB2903), which was peroxidase-conjugated to the secondary antibody, followed by DAB staining. This data demonstrates the use of this antibody for immunohistochemistry; clinical relevance has not been evaluated. BC = breast carcinoma.

Specification

Product Description	Rabbit polyclonal antibody raised against synthetic peptide of PFTK2.
Immunogen	A synthetic peptide (conjugated with KLH) corresponding to N-terminus of human PFTK2.
Host	Rabbit
Reactivity	Human, Mouse
Form	Liquid
Purification	Protein G purification

Recommend Usage	Western Blot (1:1000) Immunohistochemistry (1:50-100) The optimal working dilution should be determined by the end user.
Storage Buffer	In PBS (0.09% sodium azide)
Storage Instruction	Store at 4°C. For long term storage store at -20°C. Aliquot to avoid repeated freezing and thawing.
Note	This product contains sodium azide: a POISONOUS AND HAZARDOUS SUBSTANCE which should be handled by trained staff only.

Applications

- Western Blot (Tissue lysate)

Western blot analysis of PFTK2 polyclonal antibody (Cat # PAB2903) in mouse cerebellum tissue lysate. ALS2CR7 (arrow) was detected using purified polyclonal antibody. Secondary HRP-anti-rabbit was used for signal visualization with chemiluminescence.

- Immunohistochemistry (Formalin/PFA-fixed paraffin-embedded sections)

Formalin-fixed and paraffin-embedded human cancer tissue reacted with PFTK2 polyclonal antibody (Cat # PAB2903), which was peroxidase-conjugated to the secondary antibody, followed by DAB staining. This data demonstrates the use of this antibody for immunohistochemistry; clinical relevance has not been evaluated. BC = breast carcinoma.

Gene Info — PFTK2

Entrez GeneID	65061
Protein Accession#	Q96Q40
Gene Name	PFTK2
Gene Alias	ALS2CR7
Gene Description	PFTAIRE protein kinase 2
Gene Ontology	Hyperlink
Gene Summary	candidate 7
Other Designations	amyotrophic lateral sclerosis 2 (juvenile) chromosome region, candidate 7

Publication Reference

- [Nuclear export of ERK3 by a CRM1-dependent mechanism regulates its inhibitory action on cell cycle progression.](#)

Julien C, Coulombe P, Meloche S.

The Journal of Biological Chemistry 2003 Oct; 278(43):42615.

- [Different domains of the mitogen-activated protein kinases ERK3 and ERK2 direct subcellular localization and upstream specificity in vivo.](#)

Robinson MJ, Xu Be BE, Stippec S, Cobb MH.

The Journal of Biological Chemistry 2002 Feb; 277(7):5094.