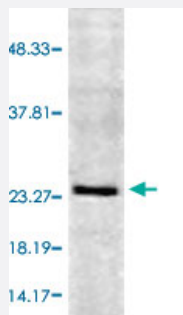


RAB5A polyclonal antibody

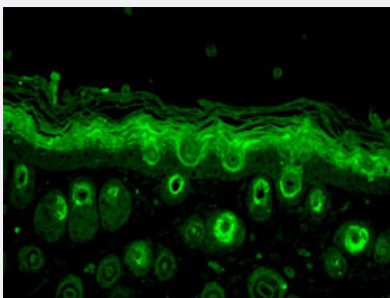
Catalog # PAB29000 Size 100 ug

Applications



Western Blot (Cell lysate)

Western blot analysis of human cell line mix with RAB5A polyclonal antibody (PAB29000) at 1:1000 dilution.



Immunofluorescence

Immunofluorescent staining of Bouin's fixed paraffin-embedded backskin sections of transgenic mice with RAB5A polyclonal antibody (PAB29000).

Specification

Product Description	Rabbit polyclonal antibody raised against synthetic peptide of RAB5A.
Immunogen	A synthetic peptide conjugated with KLH corresponding to human RAB5A.
Host	Rabbit
Reactivity	Bovine, Human, Monkey, Mouse, Rat
Specificity	The antibody recognizes 26 kDa Rab5 of the above species origins.
Form	Liquid
Purification	Protein A purification

Recommend Usage	Immunocytochemistry/Immunofluorescence (1:80) Immunohistochemistry (1:100) Western blot (1:1000) The optimal working dilution should be determined by the end user.
Storage Buffer	In PBS (50% glycerol, 0.09% sodium azide).
Storage Instruction	Store at -20°C. Aliquot to avoid repeated freezing and thawing.
Note	This product contains sodium azide: a POISONOUS AND HAZARDOUS SUBSTANCE which should be handled by trained staff only.

Applications

- Western Blot (Cell lysate)

Western blot analysis of human cell line mix with RAB5A polyclonal antibody (PAB29000) at 1:1000 dilution.

- Immunohistochemistry

- Immunofluorescence

Immunofluorescent staining of Bouin's fixed paraffin-embedded backskin sections of transgenic mice with RAB5A polyclonal antibody (PAB29000).

Gene Info — RAB5A

Entrez GeneID	5868
Protein Accession#	Q6F44
Gene Name	RAB5A
Gene Alias	RAB5
Gene Description	RAB5A, member RAS oncogene family
Omim ID	179512
Gene Ontology	Hyperlink
Gene Summary	O
Other Designations	RAS-associated protein RAB5A

Pathway

- [Amyotrophic lateral sclerosis \(ALS\)](#)
- [Endocytosis](#)

Disease

- [Cardiovascular Diseases](#)
- [Diabetes Mellitus](#)
- [Edema](#)