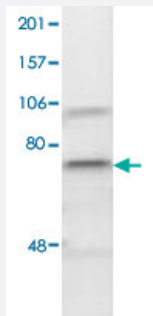


KDEL polyclonal antibody

Catalog # PAB28964 Size 200 ug

Applications



Western Blot (Cell lysate)

Western blot analysis of 1:1000 diluted human cell lysate (300 ug/gel) with KDEL polyclonal antibody (PAB28964) at 1:500 dilution.

Specification

Product Description	Rabbit polyclonal antibody raised against synthetic peptide of KDEL.
Immunogen	A synthetic peptide corresponding to KDEL.
Host	Rabbit
Reactivity	Human, Mouse, Rat
Specificity	Recognizes KDEL proteins, Hsp90b1, Hspa5, PDI and Calr. It may also see PDIA3 and Erp29.
Form	Liquid
Purification	Affinity purification
Recommend Usage	Immunohistochemistry Western blot (1:1000) The optimal working dilution should be determined by the end user.
Storage Buffer	In PBS, pH 7.2 (50% glycerol, 0.09% sodium azide)
Storage Instruction	Store at -20°C. Aliquot to avoid repeated freezing and thawing.

Note

This product contains sodium azide: a POISONOUS AND HAZARDOUS SUBSTANCE which should be handled by trained staff only.

Applications

- Western Blot (Cell lysate)

Western blot analysis of 1:1000 diluted human cell lysate (300 ug/gel) with KDEL polyclonal antibody (PAB28964) at 1:500 dilution.

- Immunohistochemistry