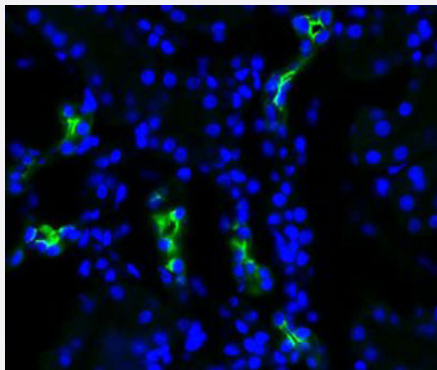


Aqp2 polyclonal antibody

Catalog # PAB28856 Size 100 ug

Applications



Immunofluorescence

Immunofluorescence staining of Aqp2 in rat kidney with Aqp2 polyclonal antibody (Cat # PAB28856) at 1:200 dilution, DAPI merged.

Specification

Product Description Rabbit polyclonal antibody raised against synthetic peptide of rat Aqp2.

Immunogen A synthetic peptide corresponding to C-terminus of rat Aqp2.

Sequence CLKGLEPDTDWEEREVRRRQ

Host Rabbit

Reactivity Human, Mouse, Rat

Specificity Detects ~28.8 kDa. May detect larger glycosylated bands ~35-50 kDa.

Form Liquid

Purification Protein A purification

Recommend Usage
Immunocytochemistry/Immunofluorescence (1:400)
Immunohistochemistry (1:200)
Western Blot (1:2000)
The optimal working dilution should be determined by the end user.

Storage Buffer In PBS (50% glycerol, 0.09% sodium azide).

Storage Instruction

Store at -20°C.
Aliquot to avoid repeated freezing and thawing.

Note

This product contains sodium azide: a POISONOUS AND HAZARDOUS SUBSTANCE which should be handled by trained staff only.

Applications

- Western Blot
- Immunohistochemistry
- Immunocytochemistry
- Immunofluorescence

Immunofluorescence staining of Aqp2 in rat kidney with Aqp2 polyclonal antibody (Cat # PAB28856) at 1:200 dilution, DAPI merged.

Gene Info — Aqp2

Entrez GeneID[25386](#)**Protein Accession#**[NP_037041.2; P34080](#)**Gene Name**

Aqp2

Gene Alias

AQP-2, MGC156502, aquaporin-2

Gene Description

aquaporin 2 (collecting duct)

Gene Ontology[Hyperlink](#)**Other Designations**

-