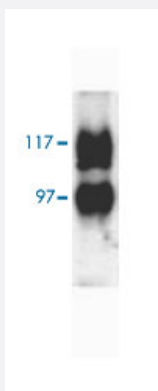


# Slc14a2 polyclonal antibody

Catalog # PAB28820      Size 100 ug

## Applications



### Western Blot (Tissue lysate)

Western blot analysis of Slc14a2 in rat kidney (inner medulla) with Slc14a2 polyclonal antibody (Cat # PAB28820) at 1:1000 dilution.

## Specification

<b>Product Description</b>	Rabbit polyclonal antibody raised against recombinant Rat Slc14a2.
<b>Immunogen</b>	Recombinant protein corresponding to Slc14a2 C-terminus (amino acids 911-929).
<b>Host</b>	Rabbit
<b>Reactivity</b>	Mouse, Rat
<b>Specificity</b>	1 ug/mL of PAB28820 was sufficient for detection of Slc14a2, ~97 and 127kDa, in 20ug of rat kidney tissue lysate by colorimetric immunoblot analysis using Goat anti-rabbit IgG:HRP as the secondary antibody.
<b>Form</b>	Liquid
<b>Purification</b>	Affinity purification
<b>Recommend Usage</b>	Immunofluorescence Western Blot (1:1000) The optimal working dilution should be determined by the end user.
<b>Storage Buffer</b>	PBS, 50% glycerol and 0.09% sodium azide

**Storage Instruction**

Store at -20°C.  
Aliquot to avoid repeated freezing and thawing.

**Note**

This product contains sodium azide: a POISONOUS AND HAZARDOUS SUBSTANCE which should be handled by trained staff only.

## Applications

- Western Blot (Tissue lysate)

Western blot analysis of Slc14a2 in rat kidney (inner medulla) with Slc14a2 polyclonal antibody (Cat # PAB28820) at 1:1000 dilution.

- Immunofluorescence

## Gene Info — Slc14a2

**Entrez GeneID**[54302](#)**Protein Accession#**[NP\\_062220](#)**Gene Name**

Slc14a2

**Gene Alias**

Slc14a2T, UrT1-C, UrT1-D, testSymbol

**Gene Description**

solute carrier family 14 (urea transporter), member 2

**Gene Ontology**[Hyperlink](#)**Gene Summary**

O

**Other Designations**

plasma membrane urea transporter|solute carrier family 14 (urea transporter), member 2T|solute carrier family 14, member 2|testName|urea transport protein|urea transporter