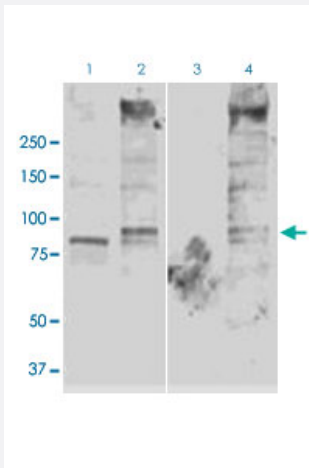


Scnn1g polyclonal antibody

Catalog # PAB28802 Size 100 ug

Applications



Western Blot (Tissue lysate)

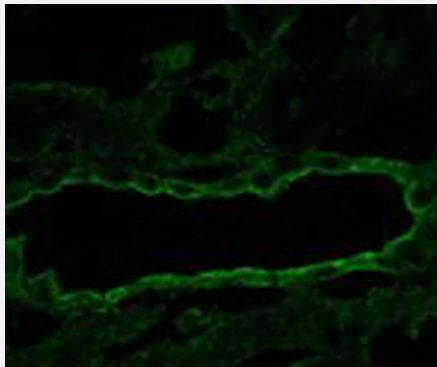
Western blot analysis of Scnn1g in mCCD (Mouse Cortical Collecting Duct) and FRT cells (mouse kidney) with Scnn1g polyclonal antibody (Cat # PAB28802) at 1:1000 dilution.

Lane 1: mCCD cell lysate

Lane 2: FRT cells expressing tagged Scnn1g

Lane 3: FRT cell lysate

Lane 4: FRT cells expressing tagged Scnn1g



Immunofluorescence

Immunofluorescence staining of Scnn1g in rat kidney with Scnn1g polyclonal antibody (Cat # PAB28802).

Specification

Product Description	Rabbit polyclonal antibody raised against recombinant Rat Scnn1g.
Immunogen	Recombinant protein corresponding to Scnn1g C-terminus (amino acids 629-650).
Host	Rabbit
Reactivity	Mouse, Rat

Specificity	1 ug/mL of PAB28802 was sufficient for detection of Scnn1g, ~83kDa, in 20ug of rat kidney tissue lysate by colorimetric immunoblot analysis using Goat anti-rabbit IgG:HRP as the secondary antibody.
Form	Liquid
Purification	Affinity purification
Recommend Usage	Immunofluorescence Immunohistochemistry Western Blot (1:1000) The optimal working dilution should be determined by the end user.
Storage Buffer	PBS, 50% glycerol and 0.09% sodium azide
Storage Instruction	Store at -20°C. Aliquot to avoid repeated freezing and thawing.
Note	This product contains sodium azide: a POISONOUS AND HAZARDOUS SUBSTANCE which should be handled by trained staff only.

Applications

- Western Blot (Tissue lysate)

Western blot analysis of Scnn1g in mCCD (Mouse Cortical Collecting Duct) and FRT cells (mouse kidney) with Scnn1g polyclonal antibody (Cat # PAB28802) at 1:1000 dilution.

Lane 1: mCCD cell lysate

Lane 2: FRT cells expressing tagged Scnn1g

Lane 3: FRT cell lysate

Lane 4: FRT cells expressing tagged Scnn1g

- Immunohistochemistry

- Immunofluorescence

Immunofluorescence staining of Scnn1g in rat kidney with Scnn1g polyclonal antibody (Cat # PAB28802).

Gene Info — Scnn1g

Entrez GeneID	24768
Protein Accession#	NP_058742
Gene Name	Scnn1g
Gene Alias	ENaC

Gene Description	sodium channel, nonvoltage-gated 1 gamma
Gene Ontology	Hyperlink
Gene Summary	O
Other Designations	Sodium channel nonvoltage-gated 1 gamma (epithelial) Sodium channel, nonvoltage-gated 1, gamma (epithelial) amiloride sensitive sodium channel gamma1 subunit epithelial sodium channel gamma subunit