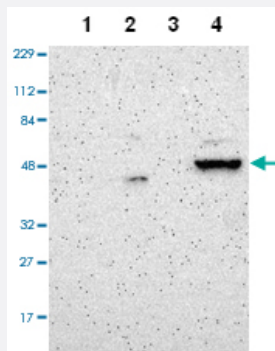


# ZNF670 polyclonal antibody

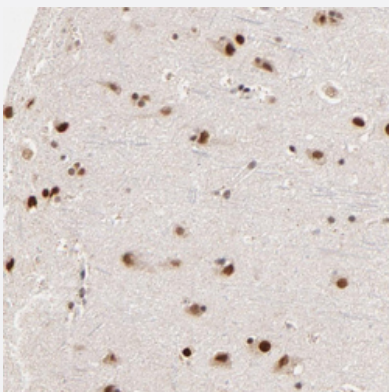
Catalog # PAB28743      Size 100 uL

## Applications



### Western Blot

Western blot analysis of Lane 1: Human cell line RT-4, Lane 2: Human cell line U-251MG sp, Lane 3: Human plasma (IgG/HSA depleted), Lane 4: Human liver tissue with ZNF670 polyclonal antibody (Cat # PAB28743) at 1:100-1:250 dilution.



### Immunohistochemistry

Immunohistochemical staining of human cerebral cortex with ZNF670 polyclonal antibody (Cat # PAB28743) shows strong nuclear positivity in neuronal cells and glial cells at 1:50-1:200 dilution.

## Specification

Product Description	Rabbit polyclonal antibody raised against recombinant ZNF670.
Immunogen	Recombinant protein corresponding to amino acids of human ZNF670.
Sequence	DVAVAFQTQEEWALLDPSQKNLYRDVMQEIFRNLASVGNKSEDQNIQDDFKNPGRNLSSHVVERL FEIKEGSQYGETFSQDSNLNLNKKVSTGVKPC
Host	Rabbit
Reactivity	Human

Form	Liquid
Purification	Antigen affinity purification
Isotype	IgG
Recommend Usage	Immunohistochemistry (1:50-1:200) Western Blot (1:100-1:250) The optimal working dilution should be determined by the end user.
Storage Buffer	In PBS, pH 7.2 (40% glycerol, 0.02% sodium azide).
Storage Instruction	Store at 4°C. For long term storage store at -20°C. Aliquot to avoid repeated freezing and thawing.
Note	This product contains sodium azide: a POISONOUS AND HAZARDOUS SUBSTANCE which should be handled by trained staff only.

## Applications

- Western Blot

Western blot analysis of Lane 1: Human cell line RT-4, Lane 2: Human cell line U-251MG sp, Lane 3: Human plasma (IgG/HSA depleted), Lane 4: Human liver tissue with ZNF670 polyclonal antibody (Cat # PAB28743) at 1:100-1:250 dilution.

- Immunohistochemistry

Immunohistochemical staining of human cerebral cortex with ZNF670 polyclonal antibody (Cat # PAB28743) shows strong nuclear positivity in neuronal cells and glial cells at 1:50-1:200 dilution.

## Gene Info — ZNF670

Entrez GeneID	<a href="#">93474</a>
Gene Name	ZNF670
Gene Alias	FLJ12606, MGC12466
Gene Description	zinc finger protein 670
Gene Ontology	<a href="#">Hyperlink</a>
Other Designations	OTTHUMP00000038527 OTTHUMP00000044272