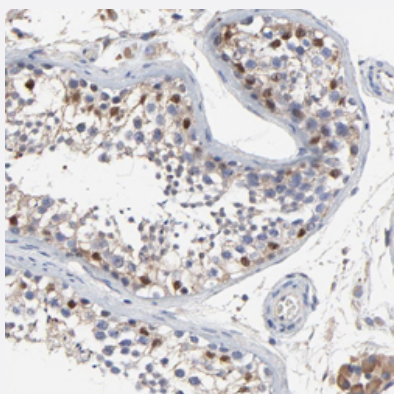


NXF3 polyclonal antibody

Catalog # PAB28740

Size 100 uL

Applications



Immunohistochemistry

Immunohistochemical staining of human testis with NXF3 polyclonal antibody (Cat # PAB28740) shows strong nuclear and cytoplasmic positivity in cells in seminiferous ducts, Leydig cells expressed moderate cytoplasmic staining at 1:50-1:200 dilution.

Specification

Product Description	Rabbit polyclonal antibody raised against recombinant NXF3.
Immunogen	Recombinant protein corresponding to amino acids of human NXF3.
Sequence	NPAGIPHFVHRELKSEKVEQIKLAMNQCCDVSQEALDIQRLPFYPDMVNRDTKMASNPRKCMASLDVHEENIPTVMSAGEMDKWKGIPEGKCADRSPVCTTFSDTSSNINSILELFPKLLCLDGQQSPRATLCGTEAHKRL
Host	Rabbit
Reactivity	Human
Form	Liquid
Purification	Antigen affinity purification
Isotype	IgG
Recommend Usage	Immunohistochemistry (1:50-1:200) The optimal working dilution should be determined by the end user.

Storage Buffer	In PBS, pH 7.2 (40% glycerol, 0.02% sodium azide)
Storage Instruction	Store at 4°C. For long term storage store at -20°C. Aliquot to avoid repeated freezing and thawing.
Note	This product contains sodium azide: a POISONOUS AND HAZARDOUS SUBSTANCE which should be handled by trained staff only.

Applications

- Immunohistochemistry

Immunohistochemical staining of human testis with NXF3 polyclonal antibody (Cat # PAB28740) shows strong nuclear and cytoplasmic positivity in cells in seminiferous ducts, Leydig cells expressed moderate cytoplasmic staining at 1:50-1:200 dilution.

Gene Info — NXF3

Entrez GeneID	56000
Gene Name	NXF3
Gene Alias	-
Gene Description	nuclear RNA export factor 3
Omim ID	300316
Gene Ontology	Hyperlink
Gene Summary	<p>This gene is one member of a family of nuclear RNA export factor genes. Common domain features of this family are a noncanonical RNP-type RNA-binding domain (RBD), 4 leucine-rich repeats (LRRs), a nuclear transport factor 2 (NTF2)-like domain that allows heterodimerization with NTF2-related export protein-1 (NXT1), and a ubiquitin-associated domain that mediates interactions with nucleoporins. The LRRs and NTF2-like domains are required for export activity. Alternative splicing seems to be a common mechanism in this gene family. The encoded protein of this gene has shortened LRR and ubiquitin-associated domains and its RBD is unable to bind RNA. It is located in the nucleoplasm but is not associated with either the nuclear envelope or the nucleolus. [provided by RefSeq]</p>
Other Designations	-