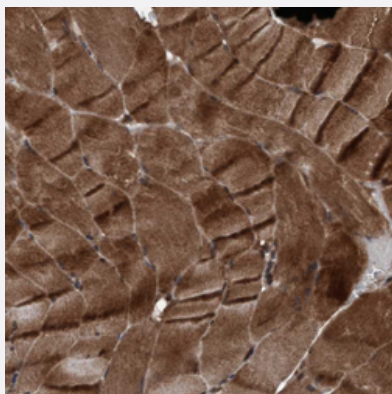


PLXNB2 polyclonal antibody

Catalog # PAB28733 Size 100 uL

Applications



Immunohistochemistry

Immunohistochemical staining of human skeletal muscle with PLXNB2 polyclonal antibody (Cat # PAB28733) shows distinct cytoplasmic positivity in myocytes at 1:20-1:50 dilution.

Specification

Product Description	Rabbit polyclonal antibody raised against recombinant PLXNB2.
Immunogen	Recombinant protein corresponding to amino acids of human PLXNB2.
Sequence	DSPSNKLLYAKEISTYKKMVEDYYKGRQMVQVSDQDMNTHLAEISRAHTDSLNTLVALHQLYQYT QKYYDEIINALEEDPAAQKMQLAFRLQQIAAALENKVTD
Host	Rabbit
Reactivity	Human
Form	Liquid
Purification	Antigen affinity purification
Isotype	IgG
Recommend Usage	Immunohistochemistry (1:20-1:50) The optimal working dilution should be determined by the end user.
Storage Buffer	In PBS, pH 7.2 (40% glycerol, 0.02% sodium azide).

Storage Instruction

Store at 4°C. For long term storage store at -20°C.
Aliquot to avoid repeated freezing and thawing.

Note

This product contains sodium azide: a POISONOUS AND HAZARDOUS SUBSTANCE which should be handled by trained staff only.

Applications

- Immunohistochemistry

Immunohistochemical staining of human skeletal muscle with PLXNB2 polyclonal antibody (Cat # PAB28733) shows distinct cytoplasmic positivity in myocytes at 1:20-1:50 dilution.

Gene Info — PLXNB2

Entrez GeneID[23654](#)**Gene Name**

PLXNB2

Gene Alias

KIAA0315, MM1, Nbla00445, PLEXB2, dJ402G11.3

Gene Description

plexin B2

Omim ID[604293](#)**Gene Ontology**[Hyperlink](#)**Gene Summary**

Members of the B class of plexins, such as PLXNB2 are transmembrane receptors that participate in axon guidance and cell migration in response to semaphorins (Perrot et al. (2002) [PubMed 12183458]).[supplied by OMIM]

Other Designations

-

Pathway

- [Axon guidance](#)