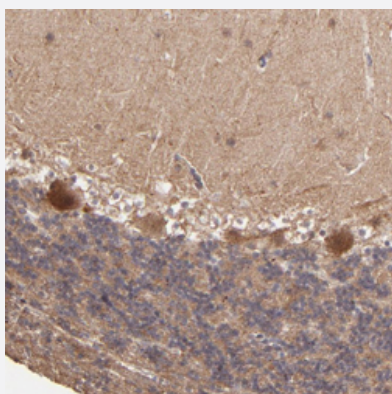


ZFYVE1 polyclonal antibody

Catalog # PAB28731 Size 100 uL

Applications



Immunohistochemistry

Immunohistochemical staining of human cerebellum with ZFYVE1 polyclonal antibody (Cat # PAB28731) shows moderate cytoplasmic positivity in purkinje cells at 1:50- 1:200 dilution.

Specification

Product Description	Rabbit polyclonal antibody raised against recombinant ZFYVE1.
Immunogen	Recombinant protein corresponding to amino acids of human ZFYVE1.
Sequence	IAPAYWRPNSQLSCNKCATSFKDNDTKHHCRACGEGFCDSCSSKTRPVPERGWGPAPVRVCD NCYEARNVQLAVTEAQVDDEGGTLIARKVGEAVQNTLGAVVTAIDPLGLVKDAARPAYWVPDHEI LHCHNCRKEFSIKLSKHH
Host	Rabbit
Reactivity	Human
Form	Liquid
Purification	Antigen affinity purification
Isotype	IgG
Recommend Usage	Immunohistochemistry (1:50-1:200) The optimal working dilution should be determined by the end user.

Storage Buffer	In PBS, pH 7.2 (40% glycerol, 0.02% sodium azide).
Storage Instruction	Store at 4°C. For long term storage store at -20°C. Aliquot to avoid repeated freezing and thawing.
Note	This product contains sodium azide: a POISONOUS AND HAZARDOUS SUBSTANCE which should be handled by trained staff only.

Applications

- Immunohistochemistry

Immunohistochemical staining of human cerebellum with ZFYVE1 polyclonal antibody (Cat # PAB28731) shows moderate cytoplasmic positivity in purkinje cells at 1:50- 1:200 dilution.

Gene Info — ZFYVE1

Entrez GeneID	53349
Gene Name	ZFYVE1
Gene Alias	DFCP1, KIAA1589, TAFF1, ZNFN2A1
Gene Description	zinc finger, FYVE domain containing 1
Omim ID	605471
Gene Ontology	Hyperlink
Gene Summary	The FYVE domain mediates the recruitment of proteins involved in membrane trafficking and cell signaling to phosphatidylinositol 3-phosphate (PtdIns(3)P)-containing membranes. This gene encodes a protein which contains two zinc-binding FYVE domains in tandem. This protein displays a predominantly Golgi, endoplasmic reticulum and vesicular distribution. Alternatively spliced transcript variants have been found for this gene, and they encode two isoforms with different sizes. [provided by RefSeq]
Other Designations	double FYVE-containing protein 1 phosphoinositide-binding protein SR3 tandem FYVE fingers-1 protein zinc finger protein, subfamily 2A (FYVE domain containing), 1 zinc finger protein, subfamily 2A, member 1