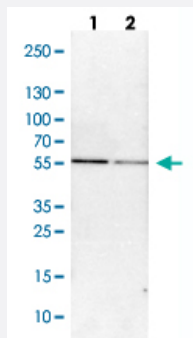


ABLIM3 polyclonal antibody

Catalog # PAB28724 Size 100 uL

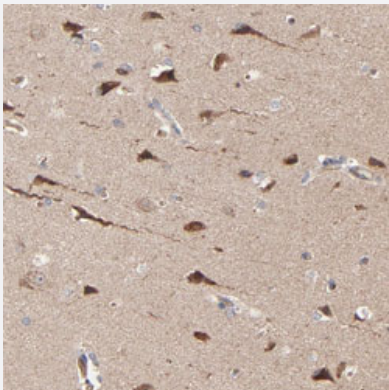
Applications



Western Blot (Cell lysate)

Western blot analysis of Lane 1: NIH-3T3 cell lysate (Mouse embryonic fibroblast cells)

Lane 2: NBT-II cell lysate (Rat Wistar bladder tumour cells) with ABLIM3 polyclonal antibody (Cat # PAB28724).



Immunohistochemistry

Immunohistochemical staining of human cerebral cortex with ABLIM3 polyclonal antibody (Cat # PAB28724) shows strong cytoplasmic positivity in neuronal cells.

Specification

Product Description	Rabbit polyclonal antibody raised against recombinant ABLIM3.
Immunogen	Recombinant protein corresponding to amino acids of human ABLIM3.
Sequence	DLSTATKSKTSEDISQTSKYSPIYSPDPYYASESEYWTYHGSPKVPRARRFSSGGEEDDFDRSMH KLQSGIGRLILKEEMKARSSSYADPWTPPRSSTSSREALHTAGYEMSLNGSPRSHYLADSDPLISK SASLPAYRRNGLHRT
Host	Rabbit
Reactivity	Human, Mouse, Rat

Form	Liquid
Purification	Antigen affinity purification
Isotype	IgG
Recommend Usage	Immunohistochemistry (1:10-1:20) Western Blot (1:100-1:500) The optimal working dilution should be determined by the end user.
Storage Buffer	In PBS, pH 7.2 (40% glycerol, 0.02% sodium azide)
Storage Instruction	Store at 4°C. For long term storage store at -20°C. Aliquot to avoid repeated freezing and thawing.
Note	This product contains sodium azide: a POISONOUS AND HAZARDOUS SUBSTANCE which should be handled by trained staff only.

Applications

- Western Blot (Cell lysate)

Western blot analysis of Lane 1: NIH-3T3 cell lysate (Mouse embryonic fibroblast cells)
Lane 2: NBT-II cell lysate (Rat Wistar bladder tumour cells)
with ABLIM3 polyclonal antibody (Cat # PAB28724).

- Immunohistochemistry

Immunohistochemical staining of human cerebral cortex with ABLIM3 polyclonal antibody (Cat # PAB28724) shows strong cytoplasmic positivity in neuronal cells.

Gene Info — ABLIM3

Entrez GeneID	22885
Gene Name	ABLIM3
Gene Alias	HMFN1661
Gene Description	actin binding LIM protein family, member 3
Omim ID	611305
Gene Ontology	Hyperlink
Gene Summary	The LIM domain is a double zinc finger structure that promotes protein-protein interactions. LIM domain proteins, such as ABLIM3, play roles in embryonic development, cell lineage determination, and cancer (Krupp et al., 2006 [PubMed 16328021]).[supplied by OMIM]

Other Designations

-

Pathway

- [Axon guidance](#)