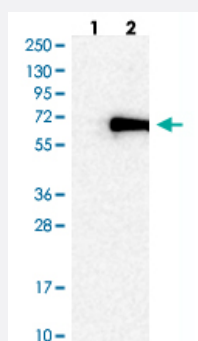


ZNF155 polyclonal antibody

Catalog # PAB28720

Size 100 uL

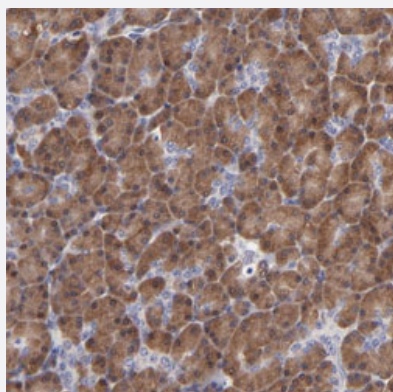
Applications



Western Blot (Transfected lysate)

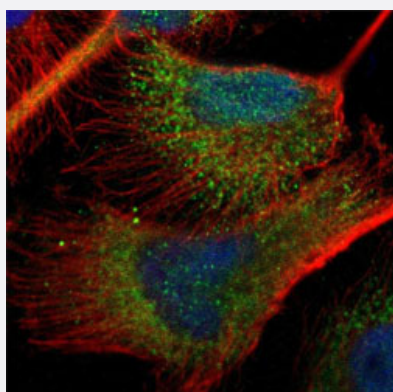
Western blot analysis of Lane 1: Negative control (vector only transfected HEK293T lysate)

Lane 2: Over-expression lysate (Co-expressed with a C-terminal myc-DDK tag (~3.1 kDa) in mammalian HEK293T cells) with ZNF155 polyclonal antibody (Cat # PAB28720) at 1:100-1:250 dilution.



Immunohistochemistry

Immunohistochemical staining of human pancreas with ZNF155 polyclonal antibody (Cat # PAB28720) shows cytoplasmic positivity in exocrine glandular cells at 1:50-1:200 dilution.



Immunofluorescence

Immunofluorescent staining of human cell line U-251MG with ZNF155 polyclonal antibody (Cat # PAB28720) at 1-4 ug/mL dilution shows positivity in nucleus but not nucleoli and cytoplasm.

Specification

Product Description	Rabbit polyclonal antibody raised against recombinant ZNF155.
Immunogen	Recombinant protein corresponding to amino acids of human ZNF155.
Sequence	TCHFLREEKFWMMGTATQREGNSGGKIQTELESVPEAGAHEEWSCQQWEQIAKDLTRSQDSIIN NSQFFENGDVPSQVEAGLPTHTGQKPSQGGKCKQSFSDVPIFDLPQ
Host	Rabbit
Reactivity	Human
Form	Liquid
Purification	Antigen affinity purification
Isotype	IgG
Recommend Usage	Immunohistochemistry (1:50-1:200) Immunofluorescence (1-4 ug/ml) Western Blot (1:100-1:250) The optimal working dilution should be determined by the end user.
Storage Buffer	In PBS, pH 7.2 (40% glycerol, 0.02% sodium azide)
Storage Instruction	Store at 4°C. For long term storage store at -20°C. Aliquot to avoid repeated freezing and thawing.
Note	This product contains sodium azide: a POISONOUS AND HAZARDOUS SUBSTANCE which should be handled by trained staff only.

Applications

- Western Blot (Transfected lysate)

Western blot analysis of Lane 1: Negative control (vector only transfected HEK293T lysate)
Lane 2: Over-expression lysate (Co-expressed with a C-terminal myc-DDK tag (~3.1 kDa) in mammalian HEK293T cells) with ZNF155 polyclonal antibody (Cat # PAB28720) at 1:100-1:250 dilution.

- Immunohistochemistry

Immunohistochemical staining of human pancreas with ZNF155 polyclonal antibody (Cat # PAB28720) shows cytoplasmic positivity in exocrine glandular cells at 1:50-1:200 dilution.

- Immunofluorescence

Immunofluorescent staining of human cell line U-251MG with ZNF155 polyclonal antibody (Cat # PAB28720) at 1-4 ug/mL dilution shows positivity in nucleus but not nucleoli and cytoplasm.

Gene Info — ZNF155

Entrez GeneID	7711
Gene Name	ZNF155
Gene Alias	MGC161655, pHZ-96
Gene Description	zinc finger protein 155
Omim ID	604086
Gene Ontology	Hyperlink
Other Designations	KRAB A domain