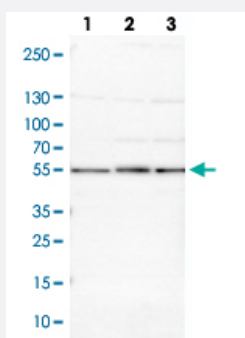


PSMD5 polyclonal antibody

Catalog # PAB28719 Size 100 uL

Applications



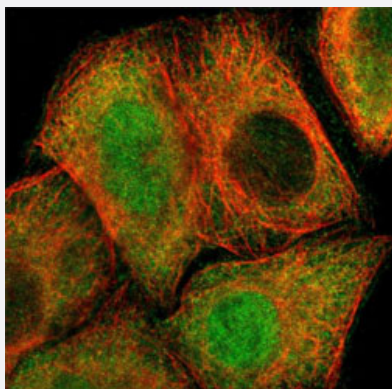
Western Blot (Cell lysate)

Western blot analysis of Lane 1: NIH-3T3 cell lysate (Mouse embryonic fibroblast cells)
Lane 2: NBT-II cell lysate (Rat Wistar bladder tumour cells)
with PSMD5 polyclonal antibody (Cat # PAB28719) at 1:100-1:500 dilution.



Immunohistochemistry

Immunohistochemical staining of human prostate with PSMD5 polyclonal antibody (Cat # PAB28719) shows strong strong nuclear positivity in glandular cells at 1:50-1:200 dilution.



Immunofluorescence

Immunofluorescent staining of human cell line A-431 with PSMD5 polyclonal antibody (Cat # PAB28719) at 1-4 ug/mL dilution shows positivity in nucleus and cytoplasm.

Specification

Product Description	Rabbit polyclonal antibody raised against recombinant PSMD5.
Immunogen	Recombinant protein corresponding to amino acids of human PSMD5.
Sequence	AAQALALLREVARLEAPLEELRALHSVLQAVPLNELRQQAELRLGPLFSLLNENHREKTTLCVSI LERLLQAMEPVHVARNLRVDLQQRGLHPDDSVKILTLSQIGRIVENS DAVTEILNNAELLKQIVYCIGG ENLS
Host	Rabbit
Reactivity	Human, Mouse, Rat
Form	Liquid
Purification	Antigen affinity purification
Isotype	IgG
Recommend Usage	Immunohistochemistry (1:50-1:200) Immunofluorescence (1-4 ug/ml) Western Blot (1:100-1:500) The optimal working dilution should be determined by the end user.
Storage Buffer	In PBS, pH 7.2 (40% glycerol, 0.02% sodium azide)
Storage Instruction	Store at 4°C. For long term storage store at -20°C. Aliquot to avoid repeated freezing and thawing.
Note	This product contains sodium azide: a POISONOUS AND HAZARDOUS SUBSTANCE which should be handled by trained staff only.

Applications

- Western Blot (Cell lysate)

Western blot analysis of Lane 1: NIH-3T3 cell lysate (Mouse embryonic fibroblast cells)
Lane 2: NBT-II cell lysate (Rat Wistar bladder tumour cells)
with PSMD5 polyclonal antibody (Cat # PAB28719) at 1:100-1:500 dilution.

- Immunohistochemistry

Immunohistochemical staining of human prostate with PSMD5 polyclonal antibody (Cat # PAB28719) shows strong strong nuclear positivity in glandular cells at 1:50-1:200 dilution.

- Immunofluorescence

Immunofluorescent staining of human cell line A-431 with PSMD5 polyclonal antibody (Cat # PAB28719) at 1-4 ug/mL dilution shows positivity in nucleus and cytoplasm.

Gene Info — PSMD5

Entrez GeneID [5711](#)

Gene Name PSMD5

Gene Alias KIAA0072, MGC23145, S5B

Gene Description proteasome (prosome, macropain) 26S subunit, non-ATPase, 5

Omim ID [604452](#)

Gene Ontology [Hyperlink](#)

Gene Summary The 26S proteasome is a multicatalytic proteinase complex with a highly ordered structure composed of 2 complexes, a 20S core and a 19S regulator. The 20S core is composed of 4 rings of 28 non-identical subunits; 2 rings are composed of 7 alpha subunits and 2 rings are composed of 7 beta subunits. The 19S regulator is composed of a base, which contains 6 ATPase subunits and 2 non-ATPase subunits, and a lid, which contains up to 10 non-ATPase subunits. Proteasomes are distributed throughout eukaryotic cells at a high concentration and cleave peptides in an ATP/ubiquitin-dependent process in a non-lysosomal pathway. An essential function of a modified proteasome, the immunoproteasome, is the processing of class I MHC peptides. This gene encodes a non-ATPase subunit of the 19S regulator base. [provided by RefSeq]

Other Designations 26S protease subunit S5 basic|26S proteasome non-ATPase regulatory subunit 5|26S proteasome subunit S5B|OTTHUMP00000021990|proteasome 26S non-ATPase subunit 5