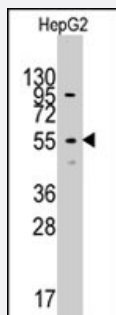


LAP3 polyclonal antibody

Catalog # PAB2871

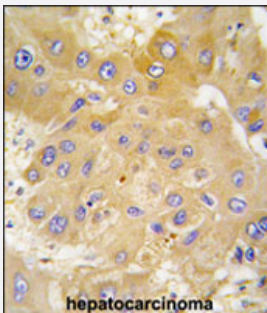
Size 400 uL

Applications



Western Blot (Cell lysate)

Western blot analysis of LAP3 polyclonal antibody (Cat # PAB2871) in HepG2 cell line lysates (35 ug/lane). LAP3 (arrow) was detected using the purified polyclonal antibody.



Immunohistochemistry (Formalin/PFA-fixed paraffin-embedded sections)

Formalin-fixed and paraffin-embedded human hepatocellular carcinoma reacted with LAP3 polyclonal antibody (Cat # PAB2871), which was peroxidase-conjugated to the secondary antibody, followed by DAB staining. This data demonstrates the use of this antibody for immunohistochemistry; clinical relevance has not been evaluated.

Specification

| | |
|----------------------------|--|
| Product Description | Rabbit polyclonal antibody raised against synthetic peptide of LAP3. |
| Immunogen | A synthetic peptide (conjugated with KLH) corresponding to N-terminus of human LAP3. |
| Host | Rabbit |
| Reactivity | Human |
| Form | Liquid |
| Purification | Ammonium sulfate precipitation |

| | |
|----------------------------|---|
| Recommend Usage | Western Blot (1:1000) Immunohistochemistry (1:10-50) The optimal working dilution should be determined by the end user. |
| Storage Buffer | In PBS (0.09% sodium azide) |
| Storage Instruction | Store at 4°C. For long term storage store at -20°C. Aliquot to avoid repeated freezing and thawing. |
| Note | This product contains sodium azide: a POISONOUS AND HAZARDOUS SUBSTANCE which should be handled by trained staff only. |

Applications

- Western Blot (Cell lysate)

Western blot analysis of LAP3 polyclonal antibody (Cat # PAB2871) in HepG2 cell line lysates (35 ug/lane). LAP3 (arrow) was detected using the purified polyclonal antibody.

- Immunohistochemistry (Formalin/PFA-fixed paraffin-embedded sections)

Formalin-fixed and paraffin-embedded human hepatocellular carcinoma reacted with LAP3 polyclonal antibody (Cat # PAB2871), which was peroxidase-conjugated to the secondary antibody, followed by DAB staining. This data demonstrates the use of this antibody for immunohistochemistry; clinical relevance has not been evaluated.

Gene Info — LAP3

| | |
|---------------------------|----------------------------------|
| Entrez GeneID | 51056 |
| Protein Accession# | NP_056991;P28838 |
| Gene Name | LAP3 |
| Gene Alias | LAP, LAPEP, PEPS |
| Gene Description | leucine aminopeptidase 3 |
| Omim ID | 170250 |
| Gene Ontology | Hyperlink |
| Other Designations | peptidase S |

Publication Reference

- [Reduced activity of the hypertension-associated Lys528Arg mutant of human adipocyte-derived leucine aminopeptidase \(A-LAP\)/ER-aminopeptidase-1.](#)

Goto Y, Hattori A, Ishii Y, Tsujimoto M.

FEBS Letters 2006 Mar; 580(7):1833.

- [Structural and immunological evidence for the identity of prolyl aminopeptidase with leucyl aminopeptidase.](#)

Matsushima M, Takahashi T, Ichinose M, Miki K, Kurokawa K, Takahashi K.

Biochemical and Biophysical Research Communications 1991 Aug; 178(3):1459.

Application: Enzyme, Recombinant proteins

Pathway

- [Arginine and proline metabolism](#)
- [Glutathione metabolism](#)
- [Metabolic pathways](#)

Disease

- [Tobacco Use Disorder](#)