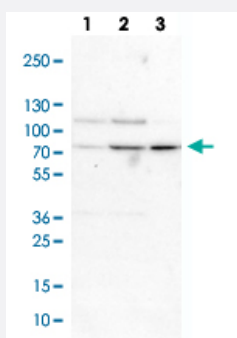


MED15 polyclonal antibody

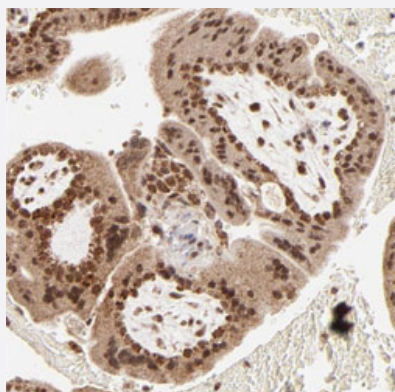
Catalog # PAB28707 Size 100 uL

Applications



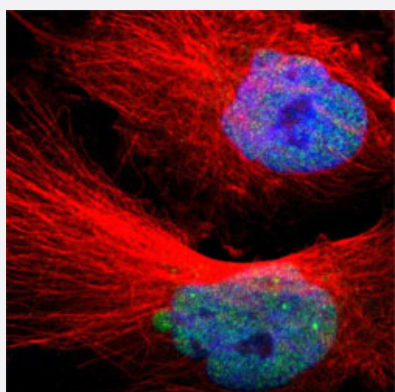
Western Blot (Cell lysate)

Western blot analysis of Lane 1: Human cell line RT-4
Lane 2: Human cell line U-251MG sp
Lane 3: Human cell line A-431
with MED15 polyclonal antibody (Cat # PAB28707) at 1:100-1:250 dilution.



Immunohistochemistry

Immunohistochemical staining of human placenta with MED15 polyclonal antibody (Cat # PAB28707) shows strong nuclear and cytoplasmic positivity in trophoblastic cells at 1:10-1:20 dilution.



Immunofluorescence

Immunofluorescent staining of human cell line U-251MG with MED15 polyclonal antibody (Cat # PAB28707) at 1-4 ug/mL dilution shows positivity in nucleus but not nucleoli.

Specification

Product Description	Rabbit polyclonal antibody raised against recombinant MED15.
Immunogen	Recombinant protein corresponding to amino acids of human MED15.
Sequence	QKLVSQIEDAMRKAGVAHSKSSKDMESHVFLKAKTRDEYLSLVARLIHFRDIHNKKSQASVSDP MNALQSLTGGPAAGAAGIGMPPRGPGQSLGGMGSLGAMGQPMSLSGQP
Host	Rabbit
Reactivity	Human, Mouse, Rat
Form	Liquid
Purification	Antigen affinity purification
Isotype	IgG
Recommend Usage	Immunohistochemistry (1:10-1:20) Immunofluorescence (1-4 ug/ml) Western Blot (1:100-1:500) The optimal working dilution should be determined by the end user.
Storage Buffer	In PBS, pH 7.2 (40% glycerol, 0.02% sodium azide)
Storage Instruction	Store at 4°C. For long term storage store at -20°C. Aliquot to avoid repeated freezing and thawing.
Note	This product contains sodium azide: a POISONOUS AND HAZARDOUS SUBSTANCE which should be handled by trained staff only.

Applications

- Western Blot (Cell lysate)

Western blot analysis of Lane 1: Human cell line RT-4

Lane 2: Human cell line U-251MG sp

Lane 3: Human cell line A-431

with MED15 polyclonal antibody (Cat # PAB28707) at 1:100-1:250 dilution.

- Immunohistochemistry

Immunohistochemical staining of human placenta with MED15 polyclonal antibody (Cat # PAB28707) shows strong nuclear and cytoplasmic positivity in trophoblastic cells at 1:10-1:20 dilution.

- Immunofluorescence

Immunofluorescent staining of human cell line U-251MG with MED15 polyclonal antibody (Cat # PAB28707) at 1-4 ug/mL dilution shows positivity in nucleus but not nucleoli.

Gene Info — MED15

Entrez GeneID	51586
Gene Name	MED15
Gene Alias	ARC105, CAG7A, CTG7A, DKFZp686A2214, DKFZp762B1216, FLJ42282, FLJ42935, PCQA P, TIG-1, TIG1, TNRC7
Gene Description	mediator complex subunit 15
Omim ID	607372
Gene Ontology	Hyperlink
Gene Summary	The protein encoded by this gene is a subunit of the multiprotein complexes PC2 and ARC/DRIP and may function as a transcriptional coactivator in RNA polymerase II transcription. This gene contains stretches of trinucleotide repeats and is located in the chromosome 22 region which is deleted in DiGeorge syndrome. Two transcript variants encoding different isoforms have been found for this gene. [provided by RefSeq]
Other Designations	CTG repeat protein 7a PC2 (positive cofactor 2, multiprotein complex) glutamine/Q-rich-associated protein PC2-glutamine-rich-associated protein TPA inducible gene-1 TPA inducible protein activator-recruited cofactor, 105-kD positive cofactor 2, glutamine/

Disease

- [Schizophrenia](#)