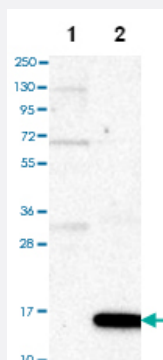


# S100A12 polyclonal antibody

Catalog # PAB28697

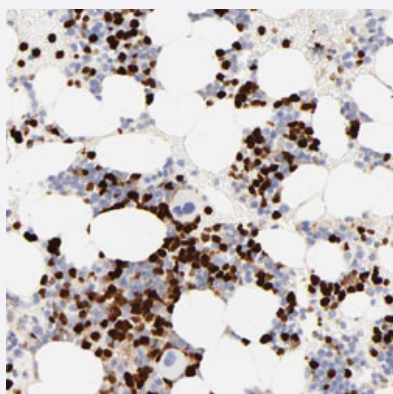
Size 100 uL

## Applications



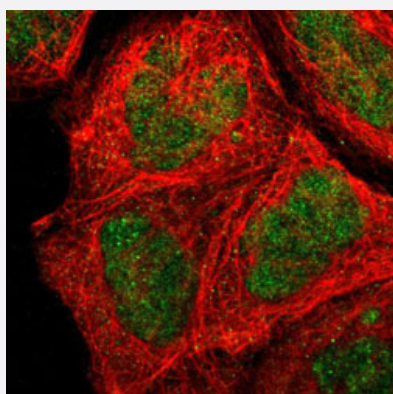
### Western Blot (Transfected lysate)

Western blot analysis of Lane 1: Negative control (vector only transfected HEK293T lysate), Lane 2: Over-expression lysate (Co-expressed with a C-terminal myc-DDK tag (~3.1 kDa) in mammalian HEK293T cells, LY401723) with S100A12 polyclonal antibody (Cat # PAB28697) at 1:100-1:250 dilution.



### Immunohistochemistry

Immunohistochemical staining of human bone marrow with S100A12 polyclonal antibody (Cat # PAB28697) shows strong nuclear positivity in bone marrow poietic cells at 1:500-1:1000 dilution.



### Immunofluorescence

Immunofluorescent staining of human cell line A-431 with S100A12 polyclonal antibody (Cat # PAB28697) at 1-4 ug/mL shows positivity in nucleus but not nucleoli.

## Specification

<b>Product Description</b>	Rabbit polyclonal antibody raised against recombinant S100A12.
<b>Immunogen</b>	Recombinant protein corresponding to amino acids of human S100A12.
<b>Sequence</b>	KLEEHLEGIVNIFHQYSVRKGHFDLTKGELKQLLTKE LANTIKNIKDKAVIDEIFQGLDANQDEQVD FQEFISLVAIALKAAHYHTHKE
<b>Host</b>	Rabbit
<b>Reactivity</b>	Human
<b>Form</b>	Liquid
<b>Purification</b>	Antigen affinity purification
<b>Isotype</b>	IgG
<b>Recommend Usage</b>	Immunohistochemistry (1:500-1:1000) Immunofluorescence (1-4 ug/ml) Western Blot (1:100-1:250) The optimal working dilution should be determined by the end user.
<b>Storage Buffer</b>	In PBS, pH 7.2 (40% glycerol, 0.02% sodium azide).
<b>Storage Instruction</b>	Store at 4°C. For long term storage store at -20°C. Aliquot to avoid repeated freezing and thawing.
<b>Note</b>	This product contains sodium azide: a POISONOUS AND HAZARDOUS SUBSTANCE which should be handled by trained staff only.

## Applications

- Western Blot (Transfected lysate)

Western blot analysis of Lane 1: Negative control (vector only transfected HEK293T lysate), Lane 2: Over-expression lysate (Co-expressed with a C-terminal myc-DDK tag (~3.1 kDa) in mammalian HEK293T cells, LY401723) with S100A12 polyclonal antibody (Cat # PAB28697) at 1:100-1:250 dilution.

- Immunohistochemistry

Immunohistochemical staining of human bone marrow with S100A12 polyclonal antibody (Cat # PAB28697) shows strong nuclear positivity in bone marrow poietic cells at 1:500-1:1000 dilution.

- Immunofluorescence

Immunofluorescent staining of human cell line A-431 with S100A12 polyclonal antibody (Cat # PAB28697) at 1-4 ug/mL shows positivity in nucleus but not nucleoli.

## Gene Info — S100A12

**Entrez GeneID** [6283](#)**Gene Name** S100A12**Gene Alias** CAAF1, CAGC, CGRP, ENRAGE, MRP6, p6**Gene Description** S100 calcium binding protein A12**Omim ID** [603112](#)**Gene Ontology** [Hyperlink](#)

**Gene Summary**

The protein encoded by this gene is a member of the S100 family of proteins containing 2 EF-hand calcium-binding motifs. S100 proteins are localized in the cytoplasm and/or nucleus of a wide range of cells, and involved in the regulation of a number of cellular processes such as cell cycle progression and differentiation. S100 genes include at least 13 members which are located as a cluster on chromosome 1q21. This protein is proposed to be involved in specific calcium-dependent signal transduction pathways and its regulatory effect on cytoskeletal components may modulate various neutrophil activities. [provided by RefSeq]

**Other Designations** OTTHUMP00000015332|S100 calcium-binding protein A12|S100 calcium-binding protein A12 (calgranulin C)|calgranulin C

## Disease

- [Kidney Calculi](#)