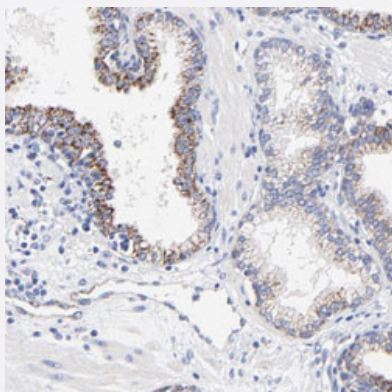


FBXO10 polyclonal antibody

Catalog # PAB28695 Size 100 uL

Applications



Immunohistochemistry

Immunohistochemical staining of human prostate with FBXO10 polyclonal antibody (Cat # PAB28695) shows moderate cytoplasmic positivity in glandular cells at 1:20-1:50 dilution.

Specification

| | |
|---------------------|---|
| Product Description | Rabbit polyclonal antibody raised against recombinant FBXO10. |
| Immunogen | Recombinant protein corresponding to amino acids of human FBXO10. |
| Sequence | SCLVLNSLQQELQKDKEAMALANSVQGCLIRKCLFRDGGKGVFVCSHGKRAKMEGNIFRNLTAV RCIHNSKIIMLRNDIYRCRASGIFLRLEGGLIAGNNIYHNAEAGV |
| Host | Rabbit |
| Reactivity | Human |
| Form | Liquid |
| Purification | Antigen affinity purification |
| Isotype | IgG |
| Recommend Usage | Immunohistochemistry (1:20-1:50) The optimal working dilution should be determined by the end user. |
| Storage Buffer | In PBS, pH 7.2 (40% glycerol, 0.02% sodium azide). |

Storage Instruction

Store at 4°C. For long term storage store at -20°C.
Aliquot to avoid repeated freezing and thawing.

Note

This product contains sodium azide: a POISONOUS AND HAZARDOUS SUBSTANCE which should be handled by trained staff only.

Applications

- Immunohistochemistry

Immunohistochemical staining of human prostate with FBXO10 polyclonal antibody (Cat # PAB28695) shows moderate cytoplasmic positivity in glandular cells at 1:20-1:50 dilution.

Gene Info — FBXO10

Entrez GeneID[26267](#)**Gene Name**

FBXO10

Gene Alias

FBX10, FLJ41992, MGC149840

Gene Description

F-box protein 10

Omim ID[609092](#)**Gene Ontology**[Hyperlink](#)**Gene Summary**

Members of the F-box protein family, such as FBXO10, are characterized by an approximately 40 -amino acid F-box motif. SCF complexes, formed by SKP1 (MIM 601434), cullin (see CUL1; MIM 603134), and F-box proteins, act as protein-ubiquitin ligases. F-box proteins interact with SKP1 through the F box, and they interact with ubiquitination targets through other protein interaction domains (Jin et al., 2004 [PubMed 15520277]).[supplied by OMIM]

Other Designations

F-box only protein 10|F-box protein Fbx10

Disease

- [Breast cancer](#)
- [Breast Neoplasms](#)
- [Genetic Predisposition to Disease](#)
- [Tobacco Use Disorder](#)