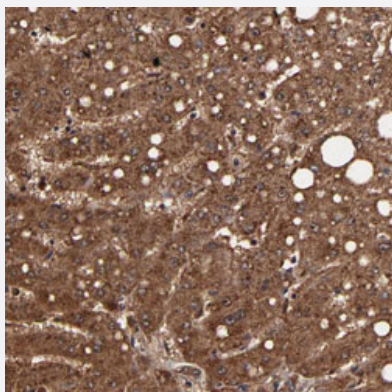


TROVE2 polyclonal antibody

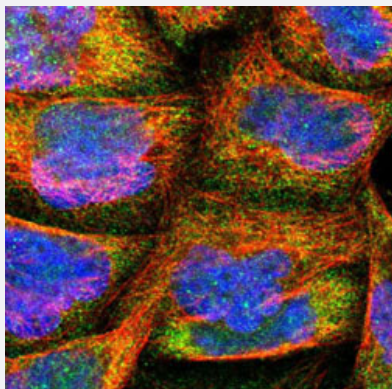
Catalog # PAB28693 Size 100 uL

Applications



Immunohistochemistry

Immunohistochemical staining of human liver with TROVE2 polyclonal antibody (Cat # PAB28693) shows strong cytoplasmic positivity in hepatocytes.



Immunofluorescence

Immunofluorescent staining of human cell line A-431 with TROVE2 polyclonal antibody (Cat # PAB28693) at 1-4 ug/mL shows positivity in cytoplasm.

Specification

Product Description	Rabbit polyclonal antibody raised against recombinant TROVE2.
Immunogen	Recombinant protein corresponding to amino acids of human TROVE2.
Sequence	FLLAVDVSASMNQRVLGSILNASTVAAAMCMVVTRTEKDSYVVAFSDEMVPVTTDMTLQQVL MAMSIQIPAGGTDCSLPMIWAQKTNTPADVFVFTDNETFAGGVHPAIALREYRKKMDIPAKLIVCG MTSNGF
Host	Rabbit

Reactivity	Human
Form	Liquid
Purification	Antigen affinity purification
Isotype	IgG
Recommend Usage	Immunohistochemistry (1:500-1:1000) Immunofluorescence (1-4 ug/ml) The optimal working dilution should be determined by the end user.
Storage Buffer	In PBS, pH 7.2 (40% glycerol, 0.02% sodium azide).
Storage Instruction	Store at 4°C. For long term storage store at -20°C. Aliquot to avoid repeated freezing and thawing.
Note	This product contains sodium azide: a POISONOUS AND HAZARDOUS SUBSTANCE which should be handled by trained staff only.

Applications

- Immunohistochemistry

Immunohistochemical staining of human liver with TROVE2 polyclonal antibody (Cat # PAB28693) shows strong cytoplasmic positivity in hepatocytes.

- Immunofluorescence

Immunofluorescent staining of human cell line A-431 with TROVE2 polyclonal antibody (Cat # PAB28693) at 1-4 ug/mL shows positivity in cytoplasm.

Gene Info — TROVE2

Entrez GeneID	6738
Gene Name	TROVE2
Gene Alias	RO60, SSA2
Gene Description	TROVE domain family, member 2
Omim ID	600063
Gene Ontology	Hyperlink
Gene Summary	O

Other Designations

OTTHUMP00000033759|OTTHUMP00000033760|OTTHUMP00000033764|Sjogren syndrome antigen A2 (60kD, ribonucleoprotein autoantigen SS-A/Ro)|Sjogren syndrome antigen A2 (60kDa, ribonucleoprotein autoantigen SS-A/Ro)|bA101E13.2 (Sjogren syndrome antigen A2 (60kD, ri

Pathway

- [Systemic lupus erythematosus](#)