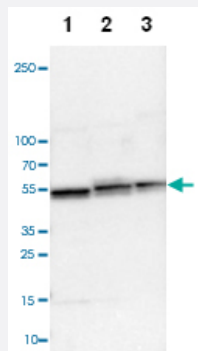


UQCRC1 polyclonal antibody

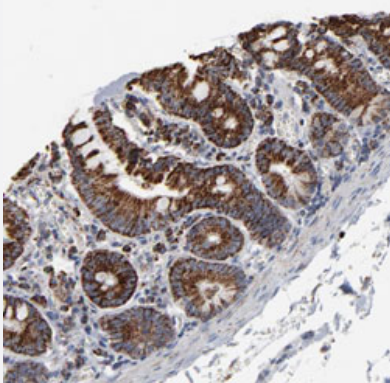
Catalog # PAB28688 Size 100 uL

Applications



Western Blot (Cell lysate)

Western blot analysis of Lane 1: NIH-3T3 cell lysate (Mouse embryonic fibroblast cells), Lane 2: NBT-II cell lysate (Rat Wistar bladder tumour cells), Lane 3: PC12 cell lysate (Pheochromocytoma of rat adrenal medulla) with UQCRC1 polyclonal antibody (Cat # PAB28688).



Immunohistochemistry

Immunohistochemical staining of human small intestine with UQCRC1 polyclonal antibody (Cat # PAB28688) shows strong cytoplasmic positivity in granular pattern in glandular cells.

Specification

Product Description	Rabbit polyclonal antibody raised against recombinant UQCRC1.
Immunogen	Recombinant protein corresponding to amino acids of human UQCRC1.
Sequence	GDIVQNCSLEDSQIEKERDVILREMQENDASMRDVVFNYLHATAFQGTPLAQAVEGPSSENVRLS RADLTEYLSHYKAPRMVLAAGGVEHQQLDLAQKHLGG
Host	Rabbit
Reactivity	Human, Mouse, Rat

Form	Liquid
Purification	Antigen affinity purification
Isotype	IgG
Recommend Usage	Immunohistochemistry (1:200-1:500) Western Blot (1:100-1:500) The optimal working dilution should be determined by the end user.
Storage Buffer	In PBS, pH 7.2 (40% glycerol, 0.02% sodium azide).
Storage Instruction	Store at 4°C. For long term storage store at -20°C. Aliquot to avoid repeated freezing and thawing.
Note	This product contains sodium azide: a POISONOUS AND HAZARDOUS SUBSTANCE which should be handled by trained staff only.

Applications

- Western Blot (Cell lysate)

Western blot analysis of Lane 1: NIH-3T3 cell lysate (Mouse embryonic fibroblast cells), Lane 2: NBT-II cell lysate (Rat Wistar bladder tumour cells), Lane 3: PC12 cell lysate (Pheochromocytoma of rat adrenal medulla) with UQCRC1 polyclonal antibody (Cat # PAB28688).

- Immunohistochemistry

Immunohistochemical staining of human small intestine with UQCRC1 polyclonal antibody (Cat # PAB28688) shows strong cytoplasmic positivity in granular pattern in glandular cells.

Gene Info — UQCRC1

Entrez GeneID	7384
Gene Name	UQCRC1
Gene Alias	D3S3191, QCR1, UQCR1
Gene Description	ubiquinol-cytochrome c reductase core protein I
Omim ID	191328
Gene Ontology	Hyperlink
Other Designations	-

Pathway

- [Cardiac muscle contraction](#)
- [Metabolic pathways](#)
- [Oxidative phosphorylation](#)