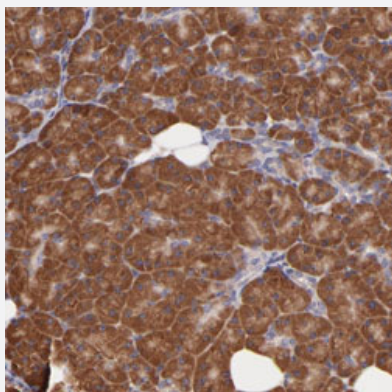


RPL11 polyclonal antibody

Catalog # PAB28685 Size 100 uL

Applications



Immunohistochemistry

Immunohistochemical staining of human pancreas with RPL11 polyclonal antibody (Cat # PAB28685) shows cytoplasmic positivity in exocrine glandular cells .

Specification

Product Description	Rabbit polyclonal antibody raised against recombinant RPL11.
Immunogen	Recombinant protein corresponding to amino acids of human RPL11.
Sequence	RAAKVLEQLTGQTPVFSKARYTVRSFGIRRNEKIAVHCTVRGAKAEIELEKGLKVREYELRKNNFS DTGNFGFGIQEHIDLGIKYDPSIGYGLDFYVVLGRPFGFSIADKKRRTGCIGAKHRISKEE
Host	Rabbit
Reactivity	Human
Form	Liquid
Purification	Antigen affinity purification
Isotype	IgG
Recommend Usage	Immunohistochemistry (1:20-1:50) The optimal working dilution should be determined by the end user.
Storage Buffer	In PBS, pH 7.2 (40% glycerol, 0.02% sodium azide).

Storage Instruction

Store at 4°C. For long term storage store at -20°C.
Aliquot to avoid repeated freezing and thawing.

Note

This product contains sodium azide: a POISONOUS AND HAZARDOUS SUBSTANCE which should be handled by trained staff only.

Applications

- Immunohistochemistry

Immunohistochemical staining of human pancreas with RPL11 polyclonal antibody (Cat # PAB28685) shows cytoplasmic positivity in exocrine glandular cells .

Gene Info — RPL11

Entrez GeneID[6135](#)**Gene Name**

RPL11

Gene Alias

GIG34

Gene Description

ribosomal protein L11

Omim ID[604175](#)**Gene Ontology**[Hyperlink](#)**Gene Summary**

Ribosomes, the organelles that catalyze protein synthesis, consist of a small 40S subunit and a large 60S subunit. Together these subunits are composed of 4 RNA species and approximately 80 structurally distinct proteins. This gene encodes a ribosomal protein that is a component of the 60S subunit. The protein belongs to the L5P family of ribosomal proteins. It is located in the cytoplasm. The protein probably associates with the 5S rRNA. Alternative splice variants encoding different isoforms may exist, but they have not been fully characterized. As is typical for genes encoding ribosomal proteins, there are multiple processed pseudogenes of this gene dispersed throughout the genome. [provided by RefSeq]

Other Designations

60S ribosomal protein L11|CLL-associated antigen KW-12|OTTHUMP00000002956|cell growth-inhibiting protein 34

Pathway

- [Ribosome](#)

Disease

- [Anemia](#)