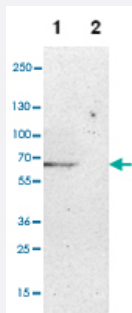


CPM polyclonal antibody

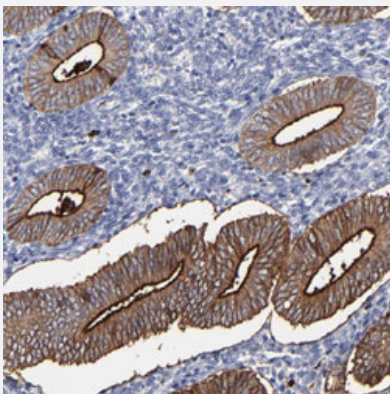
Catalog # PAB28679 Size 100 uL

Applications



Western Blot (Cell lysate)

Western blot analysis of Lane 1: NIH-3T3 cell lysate (Mouse embryonic fibroblast cells), Lane 2: NBT-II cell lysate (Rat Wistar bladder tumour cells) with CPM polyclonal antibody (Cat # PAB28679).



Immunohistochemistry

Immunohistochemical staining of human uterine corpus with CPM polyclonal antibody (Cat # PAB28679) shows strong membranous and moderate cytoplasmic positivity in glandular cells.

Specification

Product Description	Rabbit polyclonal antibody raised against recombinant CPM.
Immunogen	Recombinant protein corresponding to amino acids of human CPM.
Sequence	LKTVAQNYSSVTHLHSIGKSVKGRNLWVLVVGFRFPKEHRIGIPEFKYVANMHGDETVGRELLHLID YLVTS DGKDPEITNLINSTRIHIMPSMNPDGFEAVKKPDCYYSIGRENNQYDLNRNFPDAFEYNNV S
Host	Rabbit
Reactivity	Human, Mouse

Form	Liquid
Purification	Antigen affinity purification
Isotype	IgG
Recommend Usage	Immunohistochemistry (1:50-1:200) Western Blot (1:100-1:500) The optimal working dilution should be determined by the end user.
Storage Buffer	In PBS, pH 7.2 (40% glycerol, 0.02% sodium azide).
Storage Instruction	Store at 4°C. For long term storage store at -20°C. Aliquot to avoid repeated freezing and thawing.
Note	This product contains sodium azide: a POISONOUS AND HAZARDOUS SUBSTANCE which should be handled by trained staff only.

Applications

- Western Blot (Cell lysate)

Western blot analysis of Lane 1: NIH-3T3 cell lysate (Mouse embryonic fibroblast cells), Lane 2: NBT-II cell lysate (Rat Wistar bladder tumour cells) with CPM polyclonal antibody (Cat # PAB28679).

- Immunohistochemistry

Immunohistochemical staining of human uterine corpus with CPM polyclonal antibody (Cat # PAB28679) shows strong membranous and moderate cytoplasmic positivity in glandular cells.

Gene Info — CPM

Entrez GeneID	1368
Gene Name	CPM
Gene Alias	-
Gene Description	carboxypeptidase M
Omim ID	114860
Gene Ontology	Hyperlink

Gene Summary

The protein encoded by this gene is a membrane-bound arginine/lysine carboxypeptidase. Its expression is associated with monocyte to macrophage differentiation. This encoded protein contains hydrophobic regions at the amino and carboxy termini and has 6 potential asparagine-linked glycosylation sites. The active site residues of carboxypeptidases A and B are conserved in this protein. Three alternatively spliced transcript variants encoding the same protein have been described for this gene. [provided by RefSeq]

Other Designations

-

Disease

- [Asthma](#)
- [Depressive Disorder](#)
- [Psychomotor Performance](#)