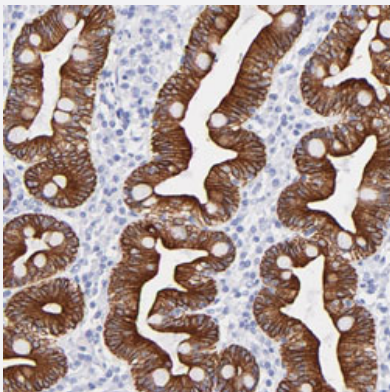


# KRT19 polyclonal antibody

Catalog # PAB28668      Size 100 uL

## Applications



### Immunohistochemistry

Immunohistochemical staining of human duodenum with KRT19 polyclonal antibody (Cat # PAB28668) shows strong cytoplasmic and membranous positivity in glandular cells at 1:200-1:500 dilution.

## Specification

Product Description	Rabbit polyclonal antibody raised against recombinant KRT19.
Immunogen	Recombinant protein corresponding to amino acids of human KRT19.
Sequence	TEELNREVAGHTEQLQMSRSEVTDLRRTLQGLEIELQSQLSMKAALEDTLAETEARFGAQLAHIQ ALISGIEAQLGDVRADSERQNQEYQRLMDIKSRLEQEIATYRSLLLEGQEDHYNNLSASKVL
Host	Rabbit
Reactivity	Human
Form	Liquid
Purification	Antigen affinity purification
Isotype	IgG
Recommend Usage	Immunohistochemistry (1:200-1:500) The optimal working dilution should be determined by the end user.
Storage Buffer	In PBS, pH 7.2 (40% glycerol, 0.02% sodium azide).

**Storage Instruction**

Store at 4°C. For long term storage store at -20°C.  
Aliquot to avoid repeated freezing and thawing.

**Note**

This product contains sodium azide: a POISONOUS AND HAZARDOUS SUBSTANCE which should be handled by trained staff only.

## Applications

- Immunohistochemistry

Immunohistochemical staining of human duodenum with KRT19 polyclonal antibody (Cat # PAB28668) shows strong cytoplasmic and membranous positivity in glandular cells at 1:200-1:500 dilution.

## Gene Info — KRT19

**Entrez GeneID**[3880](#)**Gene Name**

KRT19

**Gene Alias**

CK19, K19, K1CS, MGC15366

**Gene Description**

keratin 19

**Omim ID**[148020](#)**Gene Ontology**[Hyperlink](#)**Gene Summary**

The protein encoded by this gene is a member of the keratin family. The keratins are intermediate filament proteins responsible for the structural integrity of epithelial cells and are subdivided into cytokeratins and hair keratins. The type I cytokeratins consist of acidic proteins which are arranged in pairs of heterotypic keratin chains. Unlike its related family members, this smallest known acidic cytokeratin is not paired with a basic cytokeratin in epithelial cells. It is specifically expressed in the periderm, the transiently superficial layer that envelopes the developing epidermis. The type I cytokeratins are clustered in a region of chromosome 17q12-q21. [provided by RefSeq]

**Other Designations**

40-kDa keratin intermediate filament|cytokeratin 19|keratin, type I cytoskeletal 19|keratin, type I, 40-kd

## Disease

- [Liver Cirrhosis](#)