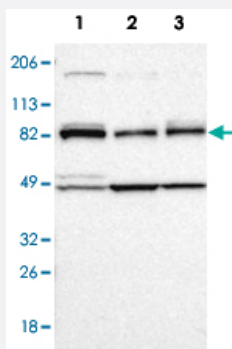


# CARS polyclonal antibody

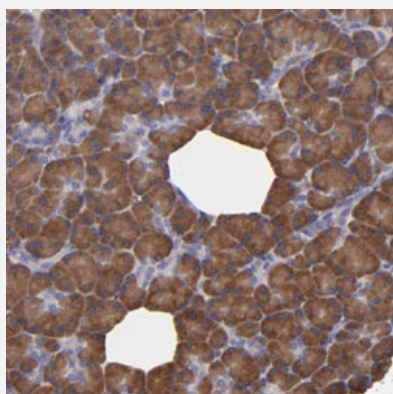
Catalog # PAB28665      Size 100 uL

## Applications



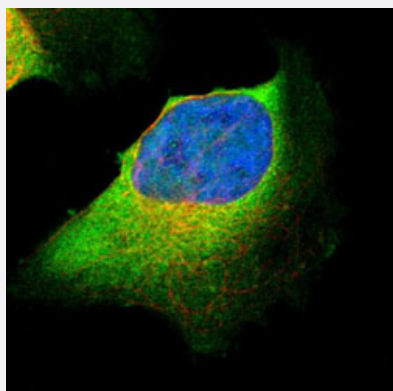
### Western Blot

Western blot analysis of Lane 1: RT-4, Lane 2: U-251MG sp, Lane 3: A-431 with CARS polyclonal antibody (Cat # PAB28665) at 1:100-1:250 dilution.



### Immunohistochemistry (Formalin/PFA-fixed paraffin-embedded sections)

Immunohistochemical staining of human pancreas with CARS polyclonal antibody (Cat # PAB28665) shows cytoplasmic positivity in exocrine glandular cells at 1:500-1:1000 dilution.



### Immunofluorescence

Immunofluorescent staining of human cell line U-2 OS with CARS polyclonal antibody (Cat # PAB28665) at 1-4 ug/mL shows positivity in cytoplasm.

## Specification

<b>Product Description</b>	Rabbit polyclonal antibody raised against recombinant CARS.
<b>Immunogen</b>	Recombinant protein corresponding to amino acids of human CARS.
<b>Sequence</b>	HLFEQYREKRPEAAQLLEDVQAALKPFSVKLNETTDPDKKQMLERIQHAVQLATEPLEKAVQSRL TGEEVNSCVEVLLEEAKDLLSDWLDSTLGCDVTDNSIFSKLPKFWEGDFHRDMEALNVLPDVL
<b>Host</b>	Rabbit
<b>Reactivity</b>	Human
<b>Form</b>	liquid
<b>Purification</b>	Antigen affinity purification
<b>Isotype</b>	IgG
<b>Recommend Usage</b>	Immunohistochemistry (Formalin/PFA-fixed paraffin-embedded sections)(1:500-1:1000) Immunofluorescence (1-4 ug/ml) Western Blot (1:100-1:250) The optimal working dilution should be determined by the end user.
<b>Storage Buffer</b>	In PBS, pH 7.2 (40% glycerol, 0.02% sodium azide)
<b>Storage Instruction</b>	Store at 4°C. For long term storage store at -20°C. Aliquot to avoid repeated freezing and thawing.
<b>Note</b>	This product contains sodium azide: a POISONOUS AND HAZARDOUS SUBSTANCE which should be handled by trained staff only.

## Applications

- Western Blot

Western blot analysis of Lane 1: RT-4, Lane 2: U-251MG sp, Lane 3: A-431 with CARS polyclonal antibody (Cat # PAB28665) at 1:100-1:250 dilution.

- Immunohistochemistry (Formalin/PFA-fixed paraffin-embedded sections)

Immunohistochemical staining of human pancreas with CARS polyclonal antibody (Cat # PAB28665) shows cytoplasmic positivity in exocrine glandular cells at 1:500-1:1000 dilution.

- Immunofluorescence

Immunofluorescent staining of human cell line U-2 OS with CARS polyclonal antibody (Cat # PAB28665) at 1-4 ug/mL shows positivity in cytoplasm.

## Gene Info — CARS

Entrez GeneID	<a href="#">833</a>
Gene Name	CARS
Gene Alias	CARS1, CYSRS, MGC:11246
Gene Description	cysteinyl-tRNA synthetase
Omim ID	<a href="#">123859</a>
Gene Ontology	<a href="#">Hyperlink</a>
Gene Summary	<p>This gene encodes a class 1 aminoacyl-tRNA synthetase, cysteinyl-tRNA synthetase. Each of the twenty aminoacyl-tRNA synthetases catalyzes the aminoacylation of a specific tRNA or tRNA isoaccepting family with the cognate amino acid. This gene is one of several located near the imprinted gene domain of 11p15.5, an important tumor-suppressor gene region. Alterations in this region have been associated with the Beckwith-Wiedemann syndrome, Wilms tumor, rhabdomyosarcoma, adrenocortical carcinoma, and lung, ovarian, and breast cancer. Alternative splicing of this gene results in multiple transcript variants encoding distinct isoforms. [provided by RefSeq]</p>
Other Designations	OTTHUMP00000012605 cysteine tRNA ligase 1, cytoplasmic cysteine transylase cysteine-tRNA ligase

## Pathway

- [Aminoacyl-tRNA biosynthesis](#)

## Disease

- [Diabetes Mellitus](#)
- [Diabetic Nephropathies](#)
- [Genetic Predisposition to Disease](#)
- [Kidney Failure](#)
- [Proteinuria](#)