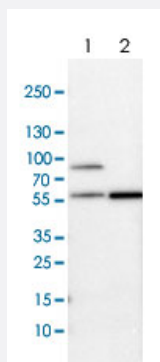


SH2D4A polyclonal antibody

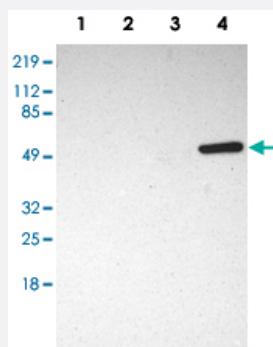
Catalog # PAB28656 Size 100 uL

Applications



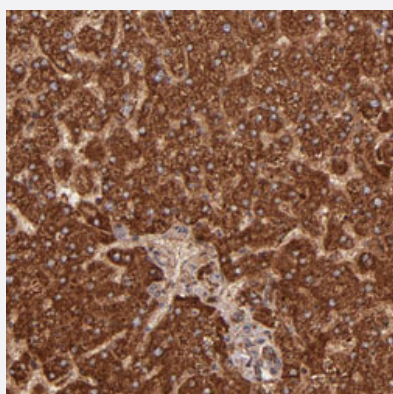
Western Blot (Tissue lysate)

Western blot analysis of Lane 1: Mouse liver tissue lysate, Lane 2: Rat liver tissue lysate with SH2D4A polyclonal antibody (Cat # PAB28656) at 1:100-1:500 dilution.



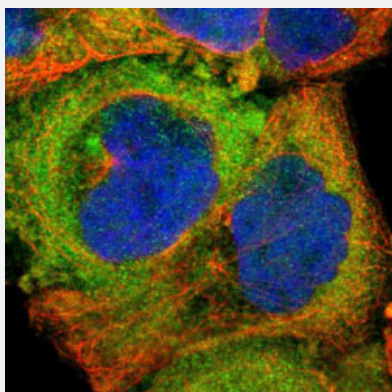
Western Blot

Western blot analysis of Lane 1: RT-4, Lane 2: U-251MG sp, Lane 3: A-431, Lane 4: Human liver with SH2D4A polyclonal antibody (Cat # PAB28656) at 1:250-1:500 dilution.



Immunohistochemistry (Formalin/PFA-fixed paraffin-embedded sections)

Immunohistochemical staining of human liver with SH2D4A polyclonal antibody (Cat # PAB28656) shows strong cytoplasmic positivity in hepatocytes at 1:50-1:200 dilution.



Immunofluorescence

Immunofluorescent staining of human cell line A-431 with SH2D4A polyclonal antibody (Cat # PAB28656) at 1-4 ug/mL shows positivity in cytoplasm.

Specification

Product Description	Rabbit polyclonal antibody raised against recombinant SH2D4A.
Immunogen	Recombinant protein corresponding to amino acids of human SH2D4A.
Sequence	KEEQLPLRAGYQKTSDTIAPWFHGILTLKKANELLLSTGMPGSFLIRVSEIKGYALSYSLEDGCKH FLIDASADAYSFLGVDQLQHATLADLVEYHKEEPITSLGKELLYPCGQQ
Host	Rabbit
Reactivity	Human, Mouse, Rat
Form	liquid
Purification	Antigen affinity purification
Isotype	IgG
Recommend Usage	Immunohistochemistry (Formalin/PFA-fixed paraffin-embedded sections)(1:50-1:200) Immunofluorescence (1-4 ug/ml) Western Blot (1:250-1:500) The optimal working dilution should be determined by the end user.
Storage Buffer	In PBS, pH 7.2 (40% glycerol, 0.02% sodium azide)
Storage Instruction	Store at 4°C. For long term storage store at -20°C. Aliquot to avoid repeated freezing and thawing.
Note	This product contains sodium azide: a POISONOUS AND HAZARDOUS SUBSTANCE which should be handled by trained staff only.

Applications

- Western Blot (Tissue lysate)

Western blot analysis of Lane 1: Mouse liver tissue lysate, Lane 2: Rat liver tissue lysate with SH2D4A polyclonal antibody (Cat # PAB28656) at 1:100-1:500 dilution.

- Western Blot

Western blot analysis of Lane 1: RT-4, Lane 2: U-251MG sp, Lane 3: A-431, Lane 4: Human liver with SH2D4A polyclonal antibody (Cat # PAB28656) at 1:250-1:500 dilution.

- Immunohistochemistry (Formalin/PFA-fixed paraffin-embedded sections)

Immunohistochemical staining of human liver with SH2D4A polyclonal antibody (Cat # PAB28656) shows strong cytoplasmic positivity in hepatocytes at 1:50-1:200 dilution.

- Immunofluorescence

Immunofluorescent staining of human cell line A-431 with SH2D4A polyclonal antibody (Cat # PAB28656) at 1-4 ug/mL shows positivity in cytoplasm.

Gene Info — SH2D4A

Entrez GeneID	63898
---------------	-----------------------

Gene Name	SH2D4A
-----------	--------

Gene Alias	FLJ20967, SH2A
------------	----------------

Gene Description	SH2 domain containing 4A
------------------	--------------------------

Gene Ontology	Hyperlink
---------------	---------------------------

Other Designations	-
--------------------	---

Disease

- [Tobacco Use Disorder](#)