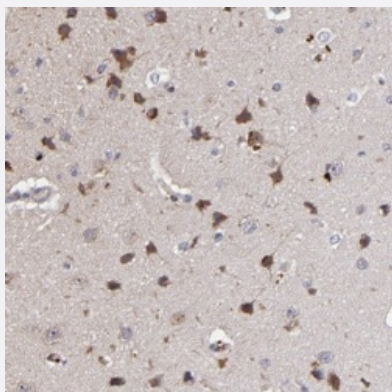


# MAGEE1 polyclonal antibody

Catalog # PAB28639      Size 100 uL

## Applications



### Immunohistochemistry (Formalin/PFA-fixed paraffin-embedded sections)

Immunohistochemical staining of human cerebral cortex with MAGEE1 polyclonal antibody (Cat # PAB28639) shows strong cytoplasmic positivity in neuronal cells at 1:20-1:50 dilution.

## Specification

Product Description	Rabbit polyclonal antibody raised against recombinant MAGEE1.
Immunogen	Recombinant protein corresponding to amino acids of human MAGEE1.
Sequence	STLFSSASVDRNPSKCSLVLPSPRVTKASVDSSEGPKGAEPIEFVLRDCESPNSISIMGLN TSRVAITLKPQDPMEQNVAELLQFLLVKDQSKYPIRE
Host	Rabbit
Reactivity	Human
Form	Liquid
Purification	Antigen affinity purification
Isotype	IgG
Recommend Usage	Immunohistochemistry (1:20-1:50) The optimal working dilution should be determined by the end user.
Storage Buffer	In PBS, pH 7.2 (40% glycerol, 0.02% sodium azide)

**Storage Instruction**

Store at 4°C. For long term storage store at -20°C.  
Aliquot to avoid repeated freezing and thawing.

**Note**

This product contains sodium azide: a POISONOUS AND HAZARDOUS SUBSTANCE which should be handled by trained staff only.

## Applications

- Immunohistochemistry (Formalin/PFA-fixed paraffin-embedded sections)

Immunohistochemical staining of human cerebral cortex with MAGEE1 polyclonal antibody (Cat # PAB28639) shows strong cytoplasmic positivity in neuronal cells at 1:20-1:50 dilution.

## Gene Info — MAGEE1

**Entrez GeneID**[57692](#)**Protein Accession#**[Q9HCL5](#)**Gene Name**

MAGEE1

**Gene Alias**

DAMAGE, HCA1, KIAA1587

**Gene Description**

melanoma antigen family E, 1

**Gene Ontology**[Hyperlink](#)**Gene Summary**

O

**Other Designations**

OTTHUMP00000023588|dystrobrevin-associated MAGE protein|hepatocellular carcinoma-associated HCA1