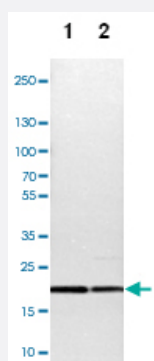


TOMM22 polyclonal antibody

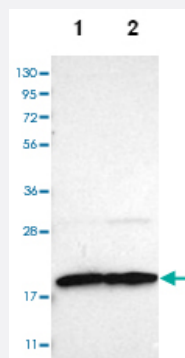
Catalog # PAB28636 Size 100 uL

Applications



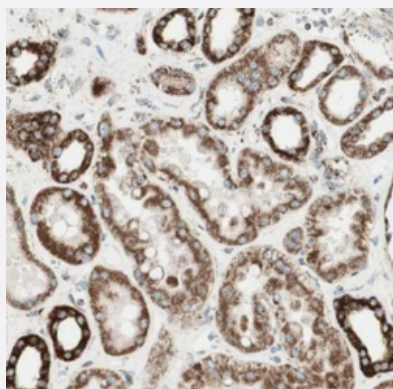
Western Blot (Cell lysate)

Western blot analysis of Lane 1: NIH-3T3 cell lysate (Mouse embryonic fibroblast cells), Lane 2: NBT-II cell lysate (Rat Wistar bladder tumour cells) with TOMM22 polyclonal antibody (Cat # PAB28636) at 1:100-1:500 dilution.



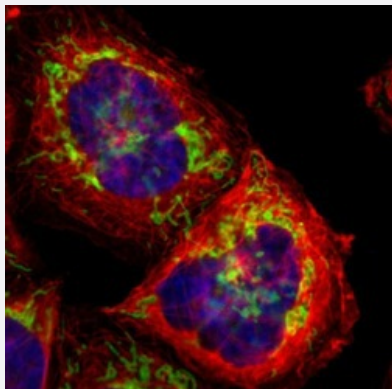
Western Blot

Western blot analysis of Lane 1: Human cell line RT-4, Lane 2: Human cell line U-251MG sp with TOMM22 polyclonal antibody (Cat # PAB28636) at 1:100-1:250 dilution.



Immunohistochemistry (Formalin/PFA-fixed paraffin-embedded sections)

Immunohistochemical staining of human kidney with TOMM22 polyclonal antibody (Cat # PAB28636) shows strong cytoplasmic positivity in renal tubules at 1:200-1:500 dilution.



Immunofluorescence

Immunofluorescent staining of human cell line A-431 with TOMM22 polyclonal antibody (Cat # PAB28636) at 1-4 ug/ml shows positivity in mitochondria.

Specification

Product Description	Rabbit polyclonal antibody raised against recombinant TOMM22.
Immunogen	Recombinant protein corresponding to amino acids of human TOMM22.
Sequence	MAAAVAAAGAGEPQSPDELLPKGDAEKPEEELEEDDDEELDETLSERLWGLTEMFPERVRSAGATFDLSLFLVAQK
Host	Rabbit
Reactivity	Human, Mouse, Rat
Form	Liquid
Purification	Antigen affinity purification
Isotype	IgG
Recommend Usage	Immunohistochemistry (1:200-1:500) Western Blot (1:100-1:250) Immunofluorescence (1-4 ug/ml) The optimal working dilution should be determined by the end user.
Storage Buffer	In PBS, pH 7.2 (40% glycerol, 0.02% sodium azide)
Storage Instruction	Store at 4°C. For long term storage store at -20°C. Aliquot to avoid repeated freezing and thawing.
Note	This product contains sodium azide: a POISONOUS AND HAZARDOUS SUBSTANCE which should be handled by trained staff only.

Applications

- Western Blot (Cell lysate)

Western blot analysis of Lane 1: NIH-3T3 cell lysate (Mouse embryonic fibroblast cells), Lane 2: NBT-II cell lysate (Rat Wistar bladder tumour cells) with TOMM22 polyclonal antibody (Cat # PAB28636) at 1:100-1:500 dilution.

- Western Blot

Western blot analysis of Lane 1: Human cell line RT-4, Lane 2: Human cell line U-251MG sp with TOMM22 polyclonal antibody (Cat # PAB28636) at 1:100-1:250 dilution.

- Immunohistochemistry (Formalin/PFA-fixed paraffin-embedded sections)

Immunohistochemical staining of human kidney with TOMM22 polyclonal antibody (Cat # PAB28636) shows strong cytoplasmic positivity in renal tubules at 1:200-1:500 dilution.

- Immunofluorescence

Immunofluorescent staining of human cell line A-431 with TOMM22 polyclonal antibody (Cat # PAB28636) at 1-4 ug/ml shows positivity in mitochondria.

Gene Info — TOMM22

Entrez GeneID [56993](#)

Protein Accession# [Q9NS69](#)

Gene Name TOMM22

Gene Alias 1C9-2, MST065, MSTP065, TOM22

Gene Description translocase of outer mitochondrial membrane 22 homolog (yeast)

Omim ID [607046](#)

Gene Ontology [Hyperlink](#)

Gene Summary The protein encoded by this gene is an integral membrane protein of the mitochondrial outer membrane. The encoded protein interacts with TOMM20 and TOMM40, and forms a complex with several other proteins to import cytosolic preproteins into the mitochondrion. [provided by RefSeq]

Other Designations mitochondrial import receptor Tom22