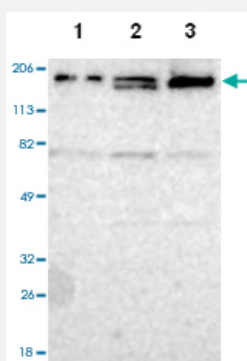


# POLA1 polyclonal antibody

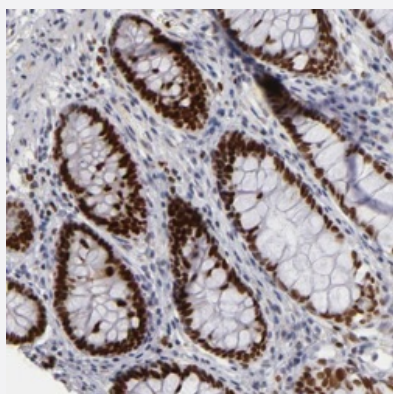
Catalog # PAB28620      Size 100 uL

## Applications



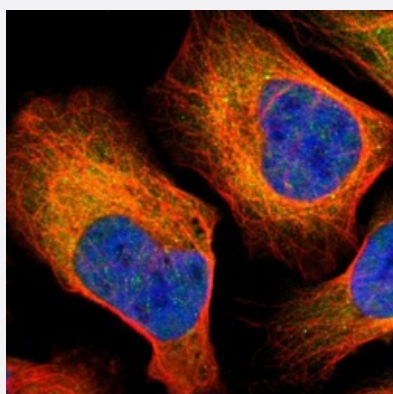
### Western Blot

Western blot analysis of Lane 1: Human cell line RT-4, Lane 2: Human cell line U-251MG sp, Lane 3: Human cell line A-431 with POLA1 polyclonal antibody (Cat # PAB28620) at 1:100-1:250 dilution.



### Immunohistochemistry (Formalin/PFA-fixed paraffin-embedded sections)

Immunohistochemical staining of human colon with POLA1 polyclonal antibody (Cat # PAB28620) shows strong nuclear positivity in glandular cells at 1:200-1:500 dilution.



### Immunofluorescence

Immunofluorescent staining of human cell line U-2 OS with POLA1 polyclonal antibody (Cat # PAB28620) at 1-4 ug/ml shows positivity in nucleus but not nucleoli & cytoplasm.

## Specification

<b>Product Description</b>	Rabbit polyclonal antibody raised against recombinant POLA1.
<b>Immunogen</b>	Recombinant protein corresponding to amino acids of human POLA1.
<b>Sequence</b>	VDLEPMAAKAWDKESPAEEVKQEADSGKGTVS <sup>Y</sup> LG <sup>S</sup> FLPDVSCWDIDQEGDSSFSVQEVQV DSSHLPLVKGADEEQVFHFYWLDAYEDQYNQPGVVFLFGK <sup>V</sup> WIESAETHVSCCV <sup>M</sup> MV <sup>K</sup>
<b>Host</b>	Rabbit
<b>Reactivity</b>	Human
<b>Form</b>	Liquid
<b>Purification</b>	Antigen affinity purification
<b>Isotype</b>	IgG
<b>Recommend Usage</b>	Immunohistochemistry (1:200-1:500) Western Blot (1:100-1:250) Immunofluorescence (1-4 ug/ml) The optimal working dilution should be determined by the end user.
<b>Storage Buffer</b>	In PBS, pH 7.2 (40% glycerol, 0.02% sodium azide)
<b>Storage Instruction</b>	Store at 4°C. For long term storage store at -20°C. Aliquot to avoid repeated freezing and thawing.
<b>Note</b>	This product contains sodium azide: a POISONOUS AND HAZARDOUS SUBSTANCE which should be handled by trained staff only.

## Applications

- Western Blot

Western blot analysis of Lane 1: Human cell line RT-4, Lane 2: Human cell line U-251MG sp, Lane 3: Human cell line A-431 with POLA1 polyclonal antibody (Cat # PAB28620) at 1:100-1:250 dilution.

- Immunohistochemistry (Formalin/PFA-fixed paraffin-embedded sections)

Immunohistochemical staining of human colon with POLA1 polyclonal antibody (Cat # PAB28620) shows strong nuclear positivity in glandular cells at 1:200-1:500 dilution.

- Immunofluorescence

Immunofluorescent staining of human cell line U-2 OS with POLA1 polyclonal antibody (Cat # PAB28620) at 1-4 ug/ml shows positivity in nucleus but not nucleoli & cytoplasm.

## Gene Info — POLA1

Entrez GeneID	<a href="#">5422</a>
Protein Accession#	<a href="#">A6NMQ1</a>
Gene Name	POLA1
Gene Alias	DKFZp686K1672, POLA, p180
Gene Description	polymerase (DNA directed), alpha 1, catalytic subunit
Omim ID	<a href="#">312040</a>
Gene Ontology	<a href="#">Hyperlink</a>
Gene Summary	alpha 1
Other Designations	OTTHUMP00000023089 polymerase (DNA-directed), alpha polymerase (DNA-directed), alpha (70kD)

## Pathway

- [DNA replication](#)
- [Metabolic pathways](#)
- [Purine metabolism](#)
- [Pyrimidine metabolism](#)