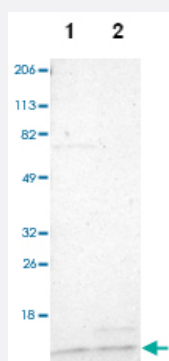


# TIMM9 polyclonal antibody

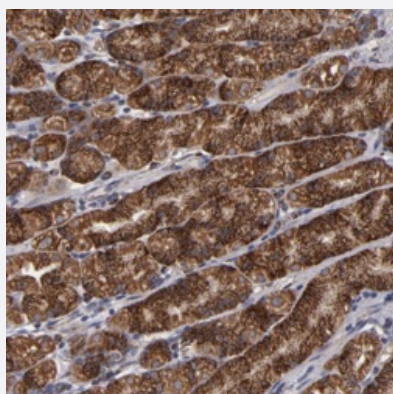
Catalog # PAB28616      Size 100 uL

## Applications



### Western Blot

Western blot analysis of Lane 1: Human cell line RT-4, Lane 2: Human cell line U-251MG sp with TIMM9 polyclonal antibody (Cat # PAB28616) at 1:100-1:250 dilution.



### Immunohistochemistry (Formalin/PFA-fixed paraffin-embedded sections)

Immunohistochemical staining of human stomach with TIMM9 polyclonal antibody (Cat # PAB28616) shows strong cytoplasmic positivity in glandular cells at 1:10-1:20 dilution.



### Immunofluorescence

Immunofluorescent staining of human cell line U-251MG with TIMM9 polyclonal antibody (Cat # PAB28616) at 1-4 ug/ml shows positivity in mitochondria.

## Specification

<b>Product Description</b>	Rabbit polyclonal antibody raised against recombinant TIMM9.
<b>Immunogen</b>	Recombinant protein corresponding to amino acids of human TIMM9.
<b>Sequence</b>	AAQIPESDQIKQFKEFLGTYNKL TETCFLDCVKDFTTREVKPEETTCSEHCLQKYLKMTQRISMRF QEYHIQQNEALAAKAGLLGQPR
<b>Host</b>	Rabbit
<b>Reactivity</b>	Human
<b>Form</b>	Liquid
<b>Purification</b>	Antigen affinity purification
<b>Isotype</b>	IgG
<b>Recommend Usage</b>	Immunohistochemistry (1:10-1:20) Western Blot (1:100-1:250) Immunofluorescence (1-4 ug/ml) The optimal working dilution should be determined by the end user.
<b>Storage Buffer</b>	In PBS, pH 7.2 (40% glycerol, 0.02% sodium azide)
<b>Storage Instruction</b>	Store at 4°C. For long term storage store at -20°C. Aliquot to avoid repeated freezing and thawing.
<b>Note</b>	This product contains sodium azide: a POISONOUS AND HAZARDOUS SUBSTANCE which should be handled by trained staff only.

## Applications

- Western Blot

Western blot analysis of Lane 1: Human cell line RT-4, Lane 2: Human cell line U-251MG sp with TIMM9 polyclonal antibody (Cat # PAB28616) at 1:100-1:250 dilution.

- Immunohistochemistry (Formalin/PFA-fixed paraffin-embedded sections)

Immunohistochemical staining of human stomach with TIMM9 polyclonal antibody (Cat # PAB28616) shows strong cytoplasmic positivity in glandular cells at 1:10-1:20 dilution.

- Immunofluorescence

Immunofluorescent staining of human cell line U-251MG with TIMM9 polyclonal antibody (Cat # PAB28616) at 1-4 ug/ml shows positivity in mitochondria.

## Gene Info — TIMM9

**Entrez GeneID** [26520](#)**Protein Accession#** [Q9Y5J7](#)**Gene Name** TIMM9**Gene Alias** TIM9, TIM9A**Gene Description** translocase of inner mitochondrial membrane 9 homolog (yeast)**Omim ID** [607384](#)**Gene Ontology** [Hyperlink](#)

**Gene Summary** TIMM9 belongs to a family of evolutionarily conserved proteins that are organized in heterooligomeric complexes in the mitochondrial intermembrane space. These proteins mediate the import and insertion of hydrophobic membrane proteins into the mitochondrial inner membrane.[supplied by OMIM]

**Other Designations** OTTHUMP00000179028|translocase of inner mitochondrial membrane 9 homolog