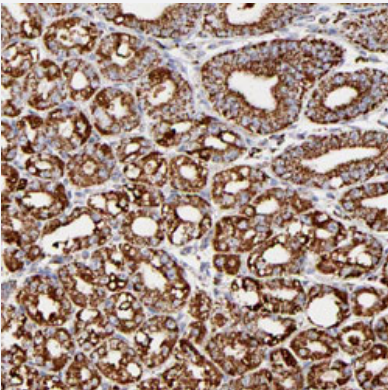


COX4I1 polyclonal antibody

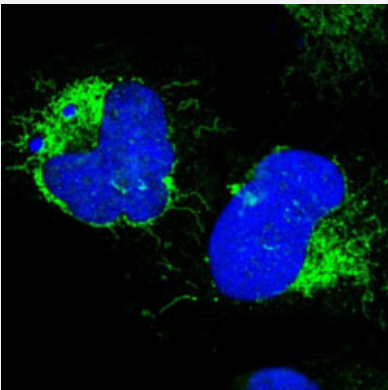
Catalog # PAB28582 Size 100 uL

Applications



Immunohistochemistry (Formalin/PFA-fixed paraffin-embedded sections)

Immunohistochemical staining of human stomach with COX4I1 polyclonal antibody (Cat#PAB28582) shows strong cytoplasmic positivity in glandular cells.



Immunofluorescence

Immunofluorescent staining of human cell line U-2 OS with COX4I1 polyclonal antibody (Cat#PAB28582) at 4 ug/ml shows positivity in nucleus and mitochondria.

Specification

Product Description	Rabbit polyclonal antibody raised against recombinant COX4I1.
Immunogen	Recombinant protein corresponding to amino acids of human COX4I1.
Sequence	LATRVFSLVGKRAISTSVCVRAHESVVKSEDFSLPAYMDRRDHPLPEVAHVKHLSASQKALKEK EKASWSSLSMDEKVELYRIKFKEFAEMNRGSNEWKT
Host	Rabbit
Reactivity	Human

Form	Liquid
Purification	Antigen affinity purification
Isotype	IgG
Recommend Usage	Immunofluorescence (1-4 ug/ml) Immunohistochemistry (1:200-1:500) The optimal working dilution should be determined by the end user.
Storage Buffer	In PBS, pH 7.2 (40% glycerol, 0.02% sodium azide)
Storage Instruction	Store at 4°C. For long term storage store at -20°C. Aliquot to avoid repeated freezing and thawing.
Note	This product contains sodium azide: a POISONOUS AND HAZARDOUS SUBSTANCE which should be handled by trained staff only.

Applications

- Immunohistochemistry (Formalin/PFA-fixed paraffin-embedded sections)

Immunohistochemical staining of human stomach with COX4I1 polyclonal antibody (Cat#PAB28582) shows strong cytoplasmic positivity in glandular cells.

- Immunofluorescence

Immunofluorescent staining of human cell line U-2 OS with COX4I1 polyclonal antibody (Cat#PAB28582) at 4 ug/ml shows positivity in nucleus and mitochondria.

Gene Info — COX4I1

Entrez GeneID	1327
Protein Accession#	H3BN72
Gene Name	COX4I1
Gene Alias	COX4, COXIV, MGC72016
Gene Description	cytochrome c oxidase subunit IV isoform 1
Omim ID	123864
Gene Ontology	Hyperlink

Gene Summary

Cytochrome c oxidase (COX) is the terminal enzyme of the mitochondrial respiratory chain. It is a multi-subunit enzyme complex that couples the transfer of electrons from cytochrome c to molecular oxygen and contributes to a proton electrochemical gradient across the inner mitochondrial membrane. The complex consists of 13 mitochondrial- and nuclear-encoded subunits. The mitochondrially-encoded subunits perform the electron transfer and proton pumping activities. The functions of the nuclear-encoded subunits are unknown but they may play a role in the regulation and assembly of the complex. This gene encodes the nuclear-encoded subunit IV isoform 1 of the human mitochondrial respiratory chain enzyme. It is located at the 3' of the NOC4 (neighbor of COX4) gene in a head-to-head orientation, and shares a promoter with it. [provided by RefSeq]

Other Designations

-

Pathway

- [Cardiac muscle contraction](#)
- [Metabolic pathways](#)
- [Oxidative phosphorylation](#)