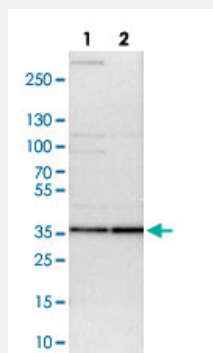


# PSMD14 polyclonal antibody

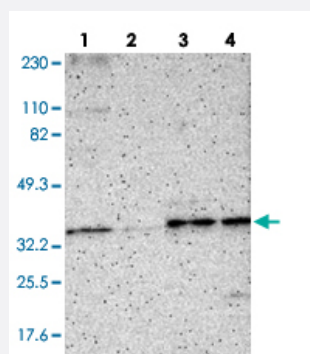
Catalog # PAB28572      Size 100 uL

## Applications



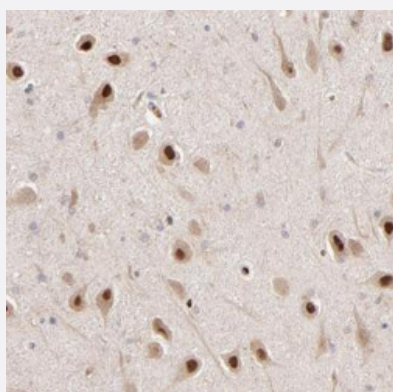
### Western Blot (Cell lysate)

Western blot analysis of lane 1: NIH-3T3 and lane 2: NBT-II cell lysates using PSMD14 polyclonal antibody (Cat # PAB28572).



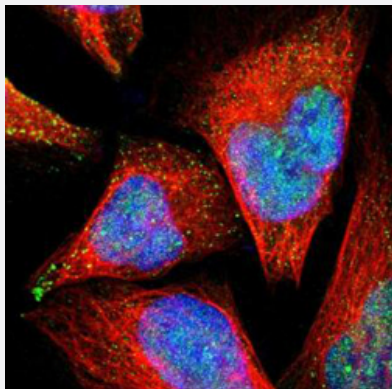
### Western Blot

Western blot analysis of lane 1: RT-4, lane 2: U-251 MG, lane 3: Liver and lane 4: Tonsil using PSMD14 polyclonal antibody (Cat # PAB28572).



### Immunohistochemistry (Formalin/PFA-fixed paraffin-embedded sections)

Immunohistochemistry (Formalin/PFA-fixed paraffin-embedded sections) of human hippocampus with PSMD14 polyclonal antibody (Cat # PAB28572) shows strong nuclear positivity in neuronal cells. Retrieval method: HIER pH6



## Immunofluorescence

Immunofluorescence of U-2 OS cell line with PSMD14 polyclonal antibody (Cat # PAB28572) shows positivity in nucleus but not nucleoli and vesicles.

Fixation/Permeabilization: PFA/Triton X-102

## Specification

<b>Product Description</b>	Rabbit polyclonal antibody raised against recombinant PSMD14.
<b>Immunogen</b>	Recombinant protein corresponding to human PSMD14.
<b>Sequence</b>	AVDTAEQVYISSLALLKMLKHGRAGVPMELMGLMLGEFVDDYTVRVIDVFAMPQSGTGVSVEAVDPVFQAKMLDMLKQTGRPEMVVGWYHSHPGFGCWLSGVDINTQQSFEALSERAVAVVVDPIQS VKGKVVIDA
<b>Host</b>	Rabbit
<b>Reactivity</b>	Human, Mouse, Rat
<b>Form</b>	Liquid
<b>Purification</b>	Antigen affinity purification
<b>Isotype</b>	IgG
<b>Recommend Usage</b>	Western Blot (Human: 1:100-1:250, Mouse/Rat: 1:100-1:500) Immunohistochemistry (Formalin/PFA-fixed paraffin-embedded sections) (1:200-1:500) Immunofluorescence (1-4 ug/ml) The optimal working dilution should be determined by the end user.
<b>Storage Buffer</b>	In PBS, pH 7.2 (40% glycerol, 0.02% sodium azide)
<b>Storage Instruction</b>	Store at 4°C. For long term storage store at -20°C. Aliquot to avoid repeated freezing and thawing.
<b>Note</b>	This product contains sodium azide: a POISONOUS AND HAZARDOUS SUBSTANCE which should be handled by trained staff only.

## Applications

- Western Blot (Cell lysate)

Western blot analysis of lane 1: NIH-3T3 and lane 2: NBT-II cell lysates using PSMD14 polyclonal antibody (Cat # PAB28572).

- Western Blot

Western blot analysis of lane 1: RT-4, lane 2: U-251 MG, lane 3: Liver and lane 4: Tonsil using PSMD14 polyclonal antibody (Cat # PAB28572).

- Immunohistochemistry (Formalin/PFA-fixed paraffin-embedded sections)

Immunohistochemistry (Formalin/PFA-fixed paraffin-embedded sections) of human hippocampus with PSMD14 polyclonal antibody (Cat # PAB28572) shows strong nuclear positivity in neuronal cells. Retrieval method: HIER pH6

- Immunofluorescence

Immunofluorescence of U-2 OS cell line with PSMD14 polyclonal antibody (Cat # PAB28572) shows positivity in nucleus but not nucleoli and vesicles. Fixation/Permeabilization: PFA/Triton X-102

## Gene Info — PSMD14

Entrez GeneID [10213](#)

Protein Accession# [O00487](#)

Gene Name PSMD14

Gene Alias PAD1, POH1, rpn11

Gene Description proteasome (prosome, macropain) 26S subunit, non-ATPase, 14

Omim ID [607173](#)

Gene Ontology [Hyperlink](#)

**Gene Summary** PSMD14 is a component of the 26S proteasome, a multiprotein complex that degrades proteins targeted for destruction by the ubiquitin pathway (Spataro et al., 1997 [PubMed 9374539]).[supplied by OMIM]

**Other Designations** 26S proteasome-associated pad1 homolog

## Pathway

- [Proteasome](#)