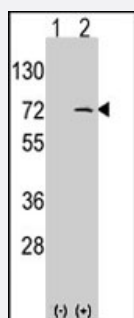


LINGO1 polyclonal antibody

Catalog # PAB2857

Size 400 uL

Applications



Western Blot (Transfected lysate)

Western blot analysis of LINGO1 (arrow) using rabbit LINGO1 polyclonal antibody (Cat # PAB2857). 293 cell lysates (2 ug/lane) either nontransfected (Lane 1) or transiently transfected with the LINGO1 gene (Lane 2) (Origene Technologies).



Immunohistochemistry (Formalin/PFA-fixed paraffin-embedded sections)

Formalin-fixed and paraffin-embedded human brain tissue reacted with LINGO1 polyclonal antibody (Cat # PAB2857) , which was peroxidase-conjugated to the secondary antibody, followed by DAB staining. This data demonstrates the use of this antibody for immunohistochemistry; clinical relevance has not been evaluated.

Specification

Product Description

Rabbit polyclonal antibody raised against synthetic peptide of LINGO1.

Immunogen

A synthetic peptide (conjugated with KLH) corresponding to N-terminus of human LINGO1.

Host

Rabbit

Reactivity

Human

Form

Liquid

Purification

Protein G purification

Recommend Usage	Western Blot (1:1000) Immunohistochemistry (1:10-50) The optimal working dilution should be determined by the end user.
Storage Buffer	In PBS (0.09% sodium azide)
Storage Instruction	Store at 4°C. For long term storage store at -20°C. Aliquot to avoid repeated freezing and thawing.
Note	This product contains sodium azide: a POISONOUS AND HAZARDOUS SUBSTANCE which should be handled by trained staff only.

Applications

- Western Blot (Transfected lysate)

Western blot analysis of LINGO1 (arrow) using rabbit LINGO1 polyclonal antibody (Cat # PAB2857). 293 cell lysates (2 ug/lane) either nontransfected (Lane 1) or transiently transfected with the LINGO1 gene (Lane 2) (Origene Technologies).

- Immunohistochemistry (Formalin/PFA-fixed paraffin-embedded sections)

Formalin-fixed and paraffin-embedded human brain tissue reacted with LINGO1 polyclonal antibody (Cat # PAB2857), which was peroxidase-conjugated to the secondary antibody, followed by DAB staining. This data demonstrates the use of this antibody for immunohistochemistry; clinical relevance has not been evaluated.

Gene Info — LINGO1

Entrez GeneID	84894
Protein Accession#	NP_116197;Q96FE5
Gene Name	LINGO1
Gene Alias	FLJ14594, LERN1, LRRN6A, MGC17422, UNQ201
Gene Description	leucine rich repeat and Ig domain containing 1
Omim ID	609791
Gene Ontology	Hyperlink
Other Designations	leucine rich repeat neuronal 6A leucine-rich repeat neuronal 6A leucine-rich repeat neuronal protein 1

Publication Reference

- [Inhibition of the leucine-rich repeat protein LINGO-1 enhances survival, structure, and function of dopaminergic neurons in Parkinson's disease models.](#)

Inoue H, Lin L, Lee X, Shao Z, Mendes S, Snodgrass-Belt P, Sweigard H, Engber T, Pepinsky B, Yang L, Beal MF, Mi S, Isacson O.

PNAS 2007 Sep; 104(36):14430.

Application: IP, WB, Human, Mouse, HEK 293T cells, Mouse brain tissues

- [TROY and LINGO-1 expression in astrocytes and macrophages/microglia in multiple sclerosis lesions.](#)

Satoh J, Tabunoki H, Yamamura T, Arima K, Konno H.

Neuropathology and Applied Neurobiology 2007 Feb; 33(1):99.

Application: IHC-P, WB-Ti, Human, Multiple sclerosis (MS) brains

- [The structure of the Lingo-1 ectodomain, a module implicated in central nervous system repair inhibition.](#)

Mosyak L, Wood A, Dwyer B, Buddha M, Johnson M, Aulabaugh A, Zhong X, Presman E, Benard S, Kelleher K, Wilhelm J, Stahl ML, Kriz R, Gao Y, Cao Z, Ling HP, Pangalos MN, Walsh FS, Somers WS.

The Journal of Biological Chemistry 2006 Nov; 281(47):36378.

Disease

- [Essential tremor](#)
- [Genetic Predisposition to Disease](#)
- [Parkinson disease](#)