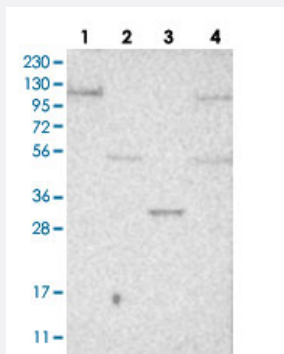


SULT1B1 polyclonal antibody

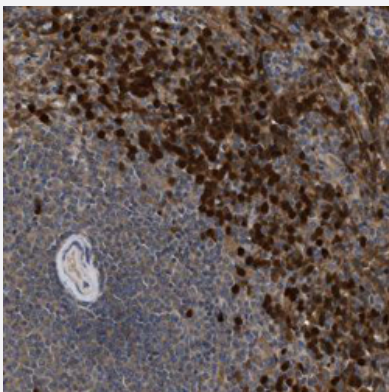
Catalog # PAB28569 Size 100 uL

Applications



Western Blot

Western blot analysis of lane 1: RT-4, lane 2: Human Plasma, lane 3: Liver and lane 4: Tonsil using SULT1B1 polyclonal antibody (Cat # PAB28569).



Immunohistochemistry (Formalin/PFA-fixed paraffin-embedded sections)

Immunohistochemistry (Formalin/PFA-fixed paraffin-embedded sections) of human spleen with SULT1B1 polyclonal antibody (Cat # PAB28569) shows strong cytoplasmic positivity in cells in red pulp. Retrieval method: HIER pH6

Specification

Product Description	Rabbit polyclonal antibody raised against recombinant SULT1B1.
Immunogen	Recombinant protein corresponding to human SULT1B1.
Sequence	KIEQFH SRPDDVIATYPKSGTTWVSEIIDMILNDGDIEKCKRGFITEKVPMLEMTLPGLRTSGIEQLE KNPSPRVKTHLPTDLLPKSFWENNCKMYLARN
Host	Rabbit
Reactivity	Human

Form	Liquid
Purification	Antigen affinity purification
Isotype	IgG
Recommend Usage	Western Blot (1:100-1:250) Immunohistochemistry (Formalin/PFA-fixed paraffin-embedded sections) (1:10-1:20) The optimal working dilution should be determined by the end user.
Storage Buffer	In PBS, pH 7.2 (40% glycerol, 0.02% sodium azide)
Storage Instruction	Store at 4°C. For long term storage store at -20°C. Aliquot to avoid repeated freezing and thawing.
Note	This product contains sodium azide: a POISONOUS AND HAZARDOUS SUBSTANCE which should be handled by trained staff only.

Applications

- Western Blot

Western blot analysis of lane 1: RT-4, lane 2: Human Plasma, lane 3: Liver and lane 4: Tonsil using SULT1B1 polyclonal antibody (Cat # PAB28569).

- Immunohistochemistry (Formalin/PFA-fixed paraffin-embedded sections)

Immunohistochemistry (Formalin/PFA-fixed paraffin-embedded sections) of human spleen with SULT1B1 polyclonal antibody (Cat # PAB28569) shows strong cytoplasmic positivity in cells in red pulp. Retrieval method: HIER pH6

Gene Info — SULT1B1

Entrez GeneID	27284
Protein Accession#	D6RD70
Gene Name	SULT1B1
Gene Alias	MGC13356, ST1B2, SULT1B2
Gene Description	sulfotransferase family, cytosolic, 1B, member 1
Omim ID	608436
Gene Ontology	Hyperlink

Gene Summary

Sulfotransferase enzymes catalyze the sulfate conjugation of many hormones, neurotransmitters, drugs, and xenobiotic compounds. These cytosolic enzymes are different in their tissue distributions and substrate specificities. The gene structure (number and length of exons) is similar among family members. However, the total genomic length of this gene is greater than that of other SULT1 genes. [provided by RefSeq]

Other Designations

sulfotransferase 1B1|sulfotransferase 1B2|thyroid hormone sulfotransferase

Disease

- [Hearing Loss](#)