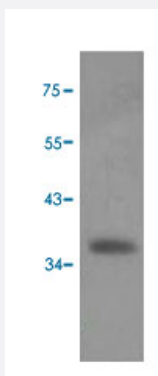


SCYE1 polyclonal antibody

Catalog # PAB28566 Size 100 uL

Applications



Western Blot

Western blot analysis of HEK293 lysate with SCYE1 polyclonal antibody (PAB28566) at 1:5000 dilution.

Specification

Product Description	Rabbit polyclonal antibody raised against recombinant SCYE1.
Immunogen	Recombinant protein corresponding to full length native recombinant human SCYE1.
Host	Rabbit
Reactivity	Human, Mouse
Form	Liquid
Recommend Usage	Western Blot(1:5000) The optimal working dilution should be determined by the end user.
Storage Buffer	In serum (0.05% sodium azide)
Storage Instruction	Store at -20°C. Aliquot to avoid repeated freezing and thawing.
Note	This product contains sodium azide: a POISONOUS AND HAZARDOUS SUBSTANCE which should be handled by trained staff only.

Applications

- Western Blot

Western blot analysis of HEK293 lysate with SCYE1 polyclonal antibody (PAB28566) at 1:5000 dilution.

Gene Info — SCYE1

Entrez GeneID [9255](#)

Gene Name SCYE1

Gene Alias AIMP1, EMAP2, EMAPII, p43

Gene Description small inducible cytokine subfamily E, member 1 (endothelial monocyte-activating)

Omim ID [603605](#)

Gene Ontology [Hyperlink](#)

Gene Summary The protein encoded by this gene is a cytokine that is specifically induced by apoptosis, and it is involved in the control of angiogenesis, inflammation, and wound healing. The release of this cytokine renders the tumor-associated vasculature sensitive to tumor necrosis factor. The precursor protein is identical to the p43 subunit, which is associated with the multi-tRNA synthetase complex, and it modulates aminoacylation activity of tRNA synthetase in normal cells. This protein is also involved in the stimulation of inflammatory responses after proteolytic cleavage in tumor cells. Multiple transcript variants encoding different isoforms have been found for this gene. A pseudogene has been identified on chromosome 20. [provided by RefSeq]

Other Designations ARS-interacting multifunctional protein 1|OTTHUMP00000161878|endothelial monocyte-activating polypeptide 2|endothelial-monocyte activating polypeptide II|multisynthetase complex auxiliary component p43|small inducible cytokine subfamily E, member 1

Disease

- [Alcoholism](#)
- [Genetic Predisposition to Disease](#)