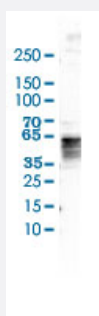


ORAI1 polyclonal antibody

Catalog # PAB28561

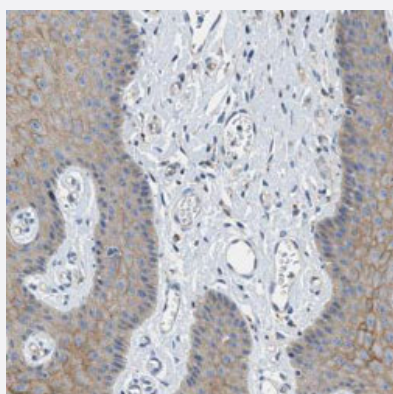
Size 100 uL

Applications



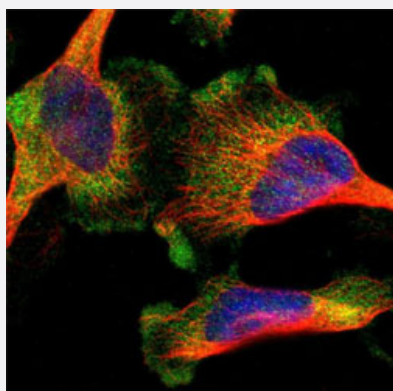
Western Blot (Cell lysate)

Western blot (Cell lysate) analysis of NB4 cell lysate.



Immunohistochemistry (Formalin/PFA-fixed paraffin-embedded sections)

Immunohistochemical staining of human vagina with ORAI1 polyclonal antibody (Cat # PAB28561) shows membranous positivity in squamous epithelial cells at 1:50-1:200 dilution.



Immunofluorescence

Immunofluorescent staining of human U-251 MG cell line shows localization to cytosol.

Specification

Product Description	Rabbit polyclonal antibody raised against recombinant ORAI1.
Immunogen	Recombinant protein corresponding to amino acids of recombinant ORAI1.
Sequence	SLVSHKTDQRQFQELNELAEFARLQDQLDHRGDHPLTPGSHYA
Host	Rabbit
Form	Liquid
Purification	Antigen affinity purification
Isotype	IgG
Recommend Usage	Immunohistochemistry(1:50-1:200) Immunofluorescence(0.25-2 ug/mL) Western Blot (0.04-0.4 ug/mL) The optimal working dilution should be determined by the end user.
Storage Buffer	In PBS, pH 7.2 (40% glycerol, 0.02% sodium azide)
Storage Instruction	Store at 4°C. For long term storage store at -20°C. Aliquot to avoid repeated freezing and thawing.
Note	This product contains sodium azide: a POISONOUS AND HAZARDOUS SUBSTANCE which should be handled by trained staff only.

Applications

- Western Blot (Cell lysate)

Western blot (Cell lysate) analysis of NB4 cell lysate.

- Immunohistochemistry (Formalin/PFA-fixed paraffin-embedded sections)

Immunohistochemical staining of human vagina with ORAI1 polyclonal antibody (Cat # PAB28561) shows membranous positivity in squamous epithelial cells at 1:50-1:200 dilution.

- Immunofluorescence

Immunofluorescent staining of human U-251 MG cell line shows localization to cytosol.

Gene Info — ORAI1

Entrez GeneID [84876](#)

Protein Accession# [Q96D31](#)

Gene Name	ORAI1
Gene Alias	CRACM1, FLJ14466, ORAT1, TMEM142A
Gene Description	ORAI calcium release-activated calcium modulator 1
Omim ID	610277
Gene Ontology	Hyperlink
Gene Summary	CRACM1 is a plasma membrane protein essential for store-operated calcium entry (Vig et al., 2006 [PubMed 16645049]).[supplied by OMIM]
Other Designations	calcium release-activated calcium channel protein 1 calcium release-activated calcium modulator 1 transmembrane protein 142A