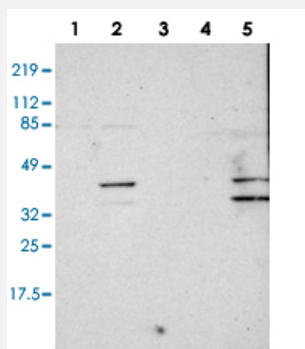


# SLMAP polyclonal antibody

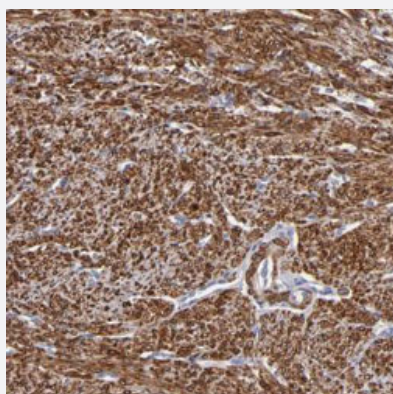
Catalog # PAB28557      Size 100 uL

## Applications



### Western Blot

Western blot analysis of Lane 1: RT-4, Lane 2: U-251 MG, Lane 3: A-431, Lane 4: Liver, Lane 5: Tonsil with SLMAP polyclonal antibody (PAB28557).



### Immunohistochemistry (Formalin/PFA-fixed paraffin-embedded sections)

Immunohistochemical staining of human smooth muscle with SLMAP polyclonal antibody (Cat # PAB28557) shows strong nuclear and cytoplasmic positivity in smooth muscle cells.

## Specification

<b>Product Description</b>	Rabbit polyclonal antibody raised against recombinant SLMAP.
<b>Immunogen</b>	Recombinant protein corresponding to amino acids of recombinant SLMAP.
<b>Sequence</b>	TTDAQMDEQDLNEPLAKVSLLKALLEEERKAYRNQVEESTKQIQVLQAQLQRLHIDTENLREEKD SEITSTRDELL
<b>Host</b>	Rabbit
<b>Reactivity</b>	Human

Form	Liquid
Purification	Antigen affinity purification
Isotype	IgG
Recommend Usage	Immunohistochemistry(1:200-1:500) Western Blot(1:100-1:250) The optimal working dilution should be determined by the end user.
Storage Buffer	In PBS, pH 7.2 (40% glycerol, 0.02% sodium azide)
Storage Instruction	Store at 4°C. For long term storage store at -20°C. Aliquot to avoid repeated freezing and thawing.
Note	This product contains sodium azide: a POISONOUS AND HAZARDOUS SUBSTANCE which should be handled by trained staff only.

## Applications

- Western Blot

Western blot analysis of Lane 1: RT-4, Lane 2: U-251 MG, Lane 3: A-431, Lane 4: Liver, Lane 5: Tonsil with SLMAP polyclonal antibody (PAB28557).

- Immunohistochemistry (Formalin/PFA-fixed paraffin-embedded sections)

Immunohistochemical staining of human smooth muscle with SLMAP polyclonal antibody (Cat # PAB28557) shows strong nuclear and cytoplasmic positivity in smooth muscle cells.

## Gene Info — SLMAP

Entrez GeneID	<a href="#">7871</a>
Protein Accession#	<a href="#">C9JCH4</a>
Gene Name	SLMAP
Gene Alias	FLJ42206, KIAA1601, MGC138760, MGC138761, SLAP
Gene Description	sarcolemma associated protein
Omim ID	<a href="#">602701</a>
Gene Ontology	<a href="#">Hyperlink</a>
Other Designations	OTTHUMP00000165233 Sarcolemmal-associated protein