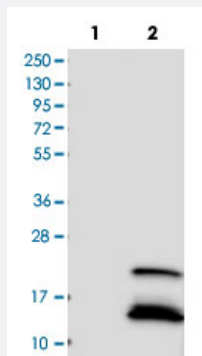


## BTG2 polyclonal antibody

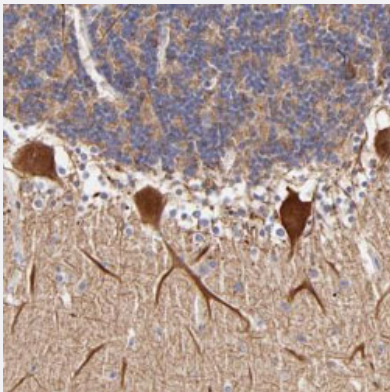
Catalog # PAB28556      Size 100 uL

### Applications



#### Western Blot (Transfected lysate)

Western blot analysis of Lane 1: Negative control (vector only transfected HEK293T lysate), Lane 2: Over-expression Lysate (Co-expressed with a C-terminal myc-DDK tag (~3.1 kDa) in mammalian HEK293T cells) with BTG2 polyclonal antibody (PAB28556) at 1:250-1:500 dilution.



#### Immunohistochemistry (Formalin/PFA-fixed paraffin-embedded sections)

Immunohistochemical staining of human cerebellum with BTG2 polyclonal antibody (Cat # PAB28556) shows strong cytoplasmic positivity in Purkinje cells at 1:200-1:500 dilution.

### Specification

Product Description	Rabbit polyclonal antibody raised against recombinant BTG2.
Immunogen	Recombinant protein corresponding to amino acids of recombinant BTG2.
Sequence	QEALTEHYKHHWFPEKPSKSGSYRCIRINHKMDPIISRVASQIGLSQPQLHQLLPSELTWVDPYE VSYRIGEDGSICVLYEEAPLAASCGLLTCKNQVLLG
Host	Rabbit
Reactivity	Human

Form	Liquid
Purification	Antigen affinity purification
Isotype	IgG
Recommend Usage	Immunohistochemistry(1:200-1:500) Western Blot(1:250-1:500) The optimal working dilution should be determined by the end user.
Storage Buffer	In PBS, pH 7.2 (40% glycerol, 0.02% sodium azide)
Storage Instruction	Store at 4°C. For long term storage store at -20°C. Aliquot to avoid repeated freezing and thawing.
Note	This product contains sodium azide: a POISONOUS AND HAZARDOUS SUBSTANCE which should be handled by trained staff only.

## Applications

- Western Blot (Transfected lysate)

Western blot analysis of Lane 1: Negative control (vector only transfected HEK293T lysate), Lane 2: Over-expression Lysate (Co-expressed with a C-terminal myc-DDK tag (~3.1 kDa) in mammalian HEK293T cells) with BTG2 polyclonal antibody (PAB28556) at 1:250-1:500 dilution.

- Immunohistochemistry (Formalin/PFA-fixed paraffin-embedded sections)

Immunohistochemical staining of human cerebellum with BTG2 polyclonal antibody (Cat # PAB28556) shows strong cytoplasmic positivity in purkinje cells at 1:200-1:500 dilution.

## Gene Info — BTG2

Entrez GeneID	<a href="#">7832</a>
Protein Accession#	<a href="#">P78543</a>
Gene Name	BTG2
Gene Alias	MGC126063, MGC126064, PC3, TIS21
Gene Description	BTG family, member 2
Omim ID	<a href="#">601597</a>
Gene Ontology	<a href="#">Hyperlink</a>

**Gene Summary**

The protein encoded by this gene is a member of the BTG/Tob family. This family has structurally related proteins that appear to have antiproliferative properties. This encoded protein is involved in the regulation of the G1/S transition of the cell cycle. [provided by RefSeq]

**Other Designations**

B-cell translocation gene 2|NGF-inducible anti-proliferative protein PC3|OTTHUMP00000033982|nerve growth factor-inducible anti-proliferative|pheochromocytoma cell-3