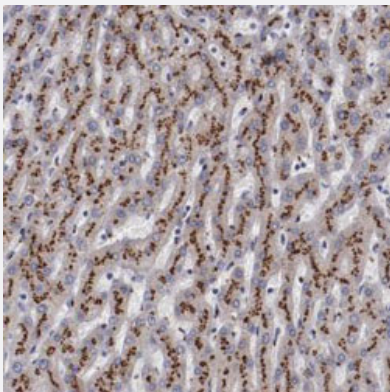


GOLIM4 polyclonal antibody

Catalog # PAB28549

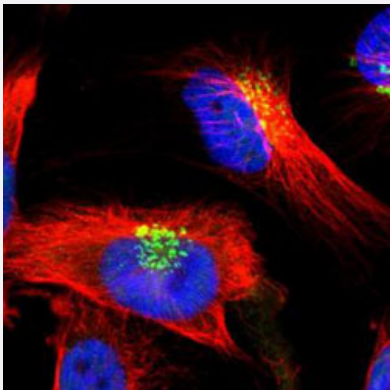
Size 100 uL

Applications



Immunohistochemistry (Formalin/PFA-fixed paraffin-embedded sections)

Immunohistochemical staining of human liver with GOLIM4 polyclonal antibody (Cat # PAB28549) shows strong cytoplasmic positivity with granular pattern in hepatocytes.



Immunofluorescence

Immunofluorescent staining of U373 MG with GOLIM4 polyclonal antibody (Cat # PAB28549) at 1-4 ug/mL dilution shows positivity in nucleus but not nucleoli & golgi apparatus.

Specification

Product Description

Rabbit polyclonal antibody raised against recombinant GOLIM4.

Immunogen

Recombinant protein corresponding to amino acids of recombinant GOLIM4.

Sequence

ENRQLRKAHQDIHTQLQDVKQQHKNLLSEHEQLVVTLEDHKSALAAAQTQVAEYKQLKDTLNRIP
SLRKPDPAEQQNVTVQVAHSPQGYNTAREKPTREVQEVSRNNDVWQ

Host

Rabbit

Reactivity

Human

Form	Liquid
Purification	Antigen affinity purification
Isotype	IgG
Recommend Usage	Immunohistochemistry(1:50-1:200) Immunofluorescence (1-4 ug/ml) The optimal working dilution should be determined by the end user.
Storage Buffer	In PBS, pH 7.2 (40% glycerol, 0.02% sodium azide)
Storage Instruction	Store at 4°C. For long term storage store at -20°C. Aliquot to avoid repeated freezing and thawing.
Note	This product contains sodium azide: a POISONOUS AND HAZARDOUS SUBSTANCE which should be handled by trained staff only.

Applications

- Immunohistochemistry (Formalin/PFA-fixed paraffin-embedded sections)

Immunohistochemical staining of human liver with GOLIM4 polyclonal antibody (Cat # PAB28549) shows strong cytoplasmic positivity with granular pattern in hepatocytes.

- Immunofluorescence

Immunofluorescent staining of U373 MG with GOLIM4 polyclonal antibody (Cat # PAB28549) at 1-4 ug/mL dilution shows positivity in nucleus but not nucleoli & golgi apparatus.

Gene Info — GOLIM4

Entrez GeneID	27333
Protein Accession#	O00461
Gene Name	GOLIM4
Gene Alias	GIMPC, GOLPH4, GPP130, P138
Gene Description	golgi integral membrane protein 4
Omim ID	606805
Gene Ontology	Hyperlink

Gene Summary

The Golgi complex plays a key role in the sorting and modification of proteins exported from the endoplasmic reticulum. The protein encoded by this gene is a type II Golgi-resident protein. It may process proteins synthesized in the rough endoplasmic reticulum and assist in the transport of protein cargo through the Golgi apparatus. [provided by RefSeq]

Other Designations

130 kDa golgi-localized phosphoprotein|cis Golgi-localized calcium-binding protein|golgi phosphoprotein 4|type II Golgi membrane protein