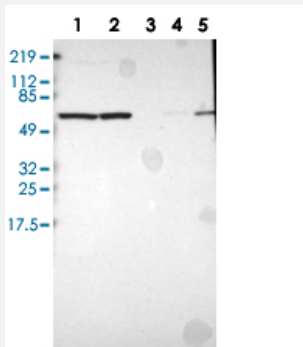


# CCT5 polyclonal antibody

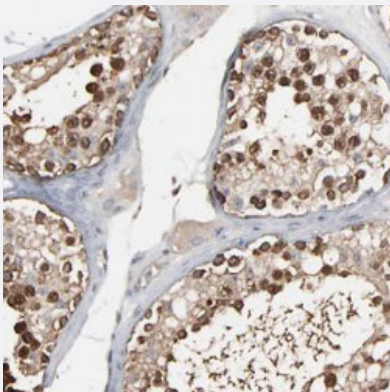
Catalog # PAB28543      Size 100 uL

## Applications



### Western Blot

Western blot analysis of Lane 1: RT-4, Lane 2: U-251 MG, Lane 3: Human Plasma, Lane 4: Liver, Lane 5: Tonsil with CCT5 polyclonal antibody (PAB28543).



### Immunohistochemistry (Formalin/PFA-fixed paraffin-embedded sections)

Immunohistochemical staining of human testis with CCT5 polyclonal antibody (Cat # PAB28543) shows strong cytoplasmic positivity in cells in seminiferous ducts.

## Specification

<b>Product Description</b>	Rabbit polyclonal antibody raised against recombinant CCT5.
<b>Immunogen</b>	Recombinant protein corresponding to amino acids of recombinant CCT5.
<b>Sequence</b>	LDRGIHPIRADGYEQAAARVAIEHLDKISDSVLVDIKDTEPLIQTAKTTLGSKVVNSCHRQMAEIAVNA VLTVADMERRDVDFELIKVEGKVGGRLEDTKLIKGVVDKDFSHPM
<b>Host</b>	Rabbit
<b>Reactivity</b>	Human

Form	Liquid
Purification	Antigen affinity purification
Isotype	IgG
Recommend Usage	Immunohistochemistry(1:20-1:50) Western Blot(1:100-1:250) The optimal working dilution should be determined by the end user.
Storage Buffer	In PBS, pH 7.2 (40% glycerol, 0.02% sodium azide)
Storage Instruction	Store at 4°C. For long term storage store at -20°C. Aliquot to avoid repeated freezing and thawing.
Note	This product contains sodium azide: a POISONOUS AND HAZARDOUS SUBSTANCE which should be handled by trained staff only.

## Applications

- Western Blot

Western blot analysis of Lane 1: RT-4, Lane 2: U-251 MG, Lane 3: Human Plasma, Lane 4: Liver, Lane 5: Tonsil with CCT5 polyclonal antibody (PAB28543).

- Immunohistochemistry (Formalin/PFA-fixed paraffin-embedded sections)

Immunohistochemical staining of human testis with CCT5 polyclonal antibody (Cat # PAB28543) shows strong cytoplasmic positivity in cells in seminiferous ducts.

## Gene Info — CCT5

Entrez GeneID	<a href="#">22948</a>
Protein Accession#	<a href="#">B4DYD8</a>
Gene Name	CCT5
Gene Alias	CCT-epsilon, CCTE, KIAA0098, TCP-1-epsilon
Gene Description	chaperonin containing TCP1, subunit 5 (epsilon)
Omim ID	<a href="#">256840</a> <a href="#">610150</a>
Gene Ontology	<a href="#">Hyperlink</a>

**Gene Summary**

This gene encodes a molecular chaperone that is member of the chaperonin containing TCP1 complex (CCT), also known as the TCP1 ring complex (TRiC). This complex consists of two identical stacked rings, each containing eight different proteins. Unfolded polypeptides enter the central cavity of the complex and are folded in an ATP-dependent manner. The complex folds various proteins, including actin and tubulin. Alternate transcriptional splice variants of this gene have been observed but have not been thoroughly characterized. [provided by RefSeq]

**Other Designations**

T-complex protein 1, epsilon subunit|chaperonin containing TCP1, epsilon

**Disease**

- [Anorexia Nervosa](#)
- [Bulimia](#)
- [Genetic Predisposition to Disease](#)
- [Hereditary Sensory and Autonomic Neuropathies](#)
- [Myopia](#)