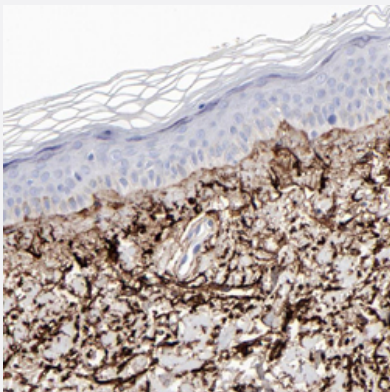


FBLN2 polyclonal antibody

Catalog # PAB28537 Size 100 uL

Applications



Immunohistochemistry (Formalin/PFA-fixed paraffin-embedded sections)

Immunohistochemical staining of human skin with FBLN2 polyclonal antibody (Cat # PAB28537) shows cytoplasmic positivity in bone marrow poietic cells at 1:50-1:200 dilution.

Specification

Product Description	Rabbit polyclonal antibody raised against recombinant FBLN2.
Immunogen	Recombinant protein corresponding to amino acids of human FBLN2.
Sequence	TLGSFHCYKALTCEPGYALKDGECEVDDECAMGTHTCQPGFLCQNTKGSFYCQARQRCMDGFLQDPEGNCVDINECTSLSEPCRPGFSCINTVGSYTCQRNPLICARGYHASDDGTCVDVNE
Host	Rabbit
Reactivity	Human
Form	Liquid
Purification	Antigen affinity purification
Isotype	IgG
Recommend Usage	Immunohistochemistry (1:50-1:200) The optimal working dilution should be determined by the end user.
Storage Buffer	In PBS, pH 7.2 (40% glycerol, 0.02% sodium azide)

Storage Instruction

Store at 4°C. For long term storage store at -20°C.
Aliquot to avoid repeated freezing and thawing.

Note

This product contains sodium azide: a POISONOUS AND HAZARDOUS SUBSTANCE which should be handled by trained staff only.

Applications

- Immunohistochemistry (Formalin/PFA-fixed paraffin-embedded sections)

Immunohistochemical staining of human skin with FBLN2 polyclonal antibody (Cat # PAB28537) shows cytoplasmic positivity in bone marrow poietic cells at 1:50-1:200 dilution.

Gene Info — FBLN2

Entrez GeneID[2199](#)**Protein Accession#**[F5H1F3](#)**Gene Name**

FBLN2

Gene Alias

-

Gene Description

fibulin 2

Omim ID[135821](#)**Gene Ontology**[Hyperlink](#)**Gene Summary**

This gene encodes an extracellular matrix protein, which belongs to the fibulin family. This protein binds various extracellular ligands and calcium. It may play a role during organ development, in particular, during the differentiation of heart, skeletal and neuronal structures. Alternatively spliced transcript variants encoding different isoforms have been identified. [provided by RefSeq]

Other Designations

-