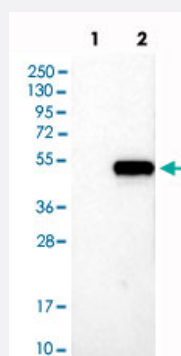


NFE2 polyclonal antibody

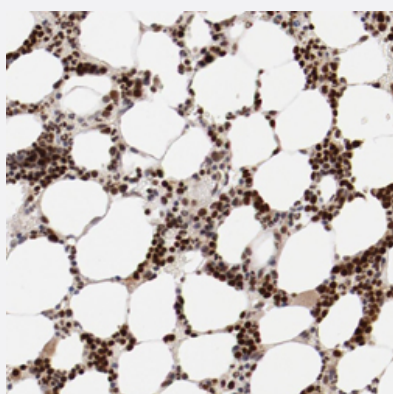
Catalog # PAB28536 Size 100 uL

Applications



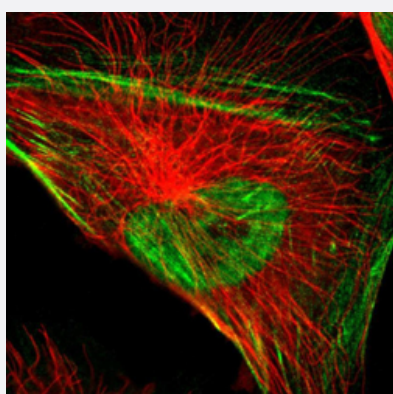
Western Blot (Transfected lysate)

Western blot analysis of Lane 1: Negative control (vector only transfected HEK293T lysate), Lane 2: Over-expression Lysate (Co-expressed with a C-terminal myc-DDK tag (~3.1 kDa) in mammalian HEK293T cells) with NFE2 polyclonal antibody (Cat # PAB28536) at 1:100-1:250 dilution.



Immunohistochemistry (Formalin/PFA-fixed paraffin-embedded sections)

Immunohistochemical staining of human NFE2 polyclonal antibody (Cat # PAB28536) shows strong nuclear positivity in bone marrow poietic cells at 1:50-1:200 dilution.



Immunofluorescence

Immunofluorescent staining of human cell line U-251MG with NFE2 polyclonal antibody (Cat # PAB28536) at 1-4 ug/ml shows positivity in nucleus but not nucleoli and cytoskeleton (actin filaments).

Specification

| | |
|----------------------------|---|
| Product Description | Rabbit polyclonal antibody raised against recombinant NFE2. |
| Immunogen | Recombinant protein corresponding to amino acids of human NFE2. |
| Sequence | SRNRVIQLSTSELGEMELTWQEIMSITE LQGLNAPSEPSFEPQAPAPYLGPPPPTTYCPCSIHPDS GFPLPPPPYELPASTSHVPDPPYSYGNMAIPVSKPLSLSGLLSEPLQDPLALLDIGLPAGPPKPQE DPES |
| Host | Rabbit |
| Reactivity | Human |
| Form | Liquid |
| Purification | Antigen affinity purification |
| Isotype | IgG |
| Recommend Usage | Western Blot (1:100-1:250) Immunofluorescence (1-4 ug/ml) Immunohistochemistry (1:50-1:200) The optimal working dilution should be determined by the end user. |
| Storage Buffer | In PBS, pH 7.2 (40% glycerol, 0.02% sodium azide) |
| Storage Instruction | Store at 4°C. For long term storage store at -20°C. Aliquot to avoid repeated freezing and thawing. |
| Note | This product contains sodium azide: a POISONOUS AND HAZARDOUS SUBSTANCE which should be handled by trained staff only. |

Applications

- Western Blot (Transfected lysate)

Western blot analysis of Lane 1: Negative control (vector only transfected HEK293T lysate), Lane 2: Over-expression Lysate (Co-expressed with a C-terminal myc-DDK tag (~3.1 kDa) in mammalian HEK293T cells) with NFE2 polyclonal antibody (Cat # PAB28536) at 1:100-1:250 dilution.

- Immunohistochemistry (Formalin/PFA-fixed paraffin-embedded sections)

Immunohistochemical staining of human NFE2 polyclonal antibody (Cat # PAB28536) shows strong nuclear positivity in bone marrow poietic cells at 1:50-1:200 dilution.

- Immunofluorescence

Immunofluorescent staining of human cell line U-251MG with NFE2 polyclonal antibody (Cat # PAB28536) at 1-4 ug/ml shows positivity in nucleus but not nucleoli and cytoskeleton (actin filaments).

Gene Info — NFE2

| | |
|--------------------|---|
| Entrez GeneID | 4778 |
| Protein Accession# | F8W1N9 |
| Gene Name | NFE2 |
| Gene Alias | NF-E2, p45 |
| Gene Description | nuclear factor (erythroid-derived 2), 45kDa |
| Omim ID | 601490 |
| Gene Ontology | Hyperlink |
| Gene Summary | O |
| Other Designations | - |