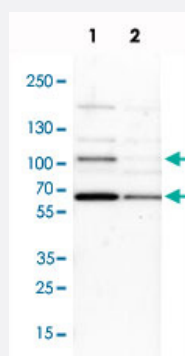


ILF3 polyclonal antibody

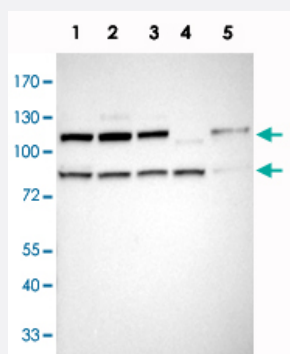
Catalog # PAB28534 Size 100 uL

Applications



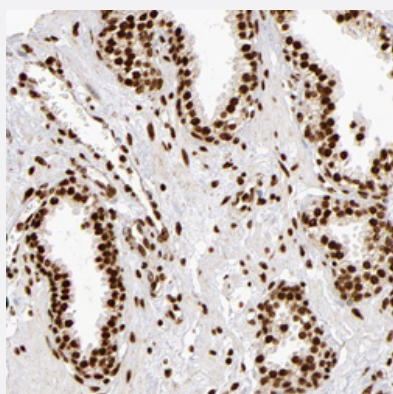
Western Blot (Cell lysate)

Western blot analysis of Lane 1: NIH-3T3 cell lysate (Mouse embryonic fibroblast cells), Lane 2: NBT-II cell lysate (Rat Wistar bladder tumour cells) with ILF3 polyclonal antibody (Cat # PAB28534) at 1:100-1:500 dilution.



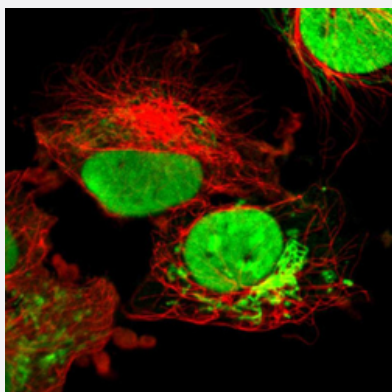
Western Blot

Western blot analysis of Lane 1: RT-4, Lane 2: U-251 MG, Lane 3: A-431, Lane 4: Liver, Lane 5: Tonsil with ILF3 polyclonal antibody (Cat # PAB28534) at 1:100-1:250 dilution.



Immunohistochemistry (Formalin/PFA-fixed paraffin-embedded sections)

Immunohistochemical staining of human prostate with ILF3 polyclonal antibody (Cat # PAB28534) shows strong nuclear positivity in glandular cells at 1:500-1:1000 dilution.



Immunofluorescence

Immunofluorescent staining of human cell line U-251MG with ILF3 polyclonal antibody (Cat # PAB28534) at 1-4 ug/ml shows positivity in nucleus and mitochondria.

Specification

Product Description	Rabbit polyclonal antibody raised against recombinant ILF3.
Immunogen	Recombinant protein corresponding to amino acids of human ILF3.
Sequence	VMAKHSSVYPTQEELEAVQNMVSHTERALKAVSDWIDEQEKGSSSEQAESDNMDVPPEDDSKE GAGEQKTEHMTRTLGRVMRVGLVAKGLLLKGDLDLELVLLCKEKPPTALLDKVADNLAIQLAAVT EDKYEILQSVDDAAIVIK
Host	Rabbit
Reactivity	Human, Mouse, Rat
Form	Liquid
Purification	Antigen affinity purification
Isotype	IgG
Recommend Usage	Western Blot (1:100-1:500) Immunofluorescence (1-4 ug/ml) Immunohistochemistry (1:500-1:1000) The optimal working dilution should be determined by the end user.
Storage Buffer	In PBS, pH 7.2 (40% glycerol, 0.02% sodium azide)
Storage Instruction	Store at 4°C. For long term storage store at -20°C. Aliquot to avoid repeated freezing and thawing.
Note	This product contains sodium azide: a POISONOUS AND HAZARDOUS SUBSTANCE which should be handled by trained staff only.

Applications

- Western Blot (Cell lysate)

Western blot analysis of Lane 1: NIH-3T3 cell lysate (Mouse embryonic fibroblast cells), Lane 2: NBT-II cell lysate (Rat Wistar bladder tumour cells) with ILF3 polyclonal antibody (Cat # PAB28534) at 1:100-1:500 dilution.

- Western Blot

Western blot analysis of Lane 1: RT-4, Lane 2: U-251 MG, Lane 3: A-431, Lane 4: Liver, Lane 5: Tonsil with ILF3 polyclonal antibody (Cat # PAB28534) at 1:100-1:250 dilution.

- Immunohistochemistry (Formalin/PFA-fixed paraffin-embedded sections)

Immunohistochemical staining of human prostate with ILF3 polyclonal antibody (Cat # PAB28534) shows strong nuclear positivity in glandular cells at 1:500-1:1000 dilution.

- Immunofluorescence

Immunofluorescent staining of human cell line U-251MG with ILF3 polyclonal antibody (Cat # PAB28534) at 1-4 ug/ml shows positivity in nucleus and mitochondria.

Gene Info — ILF3

Entrez GeneID	3609
Gene Name	ILF3
Gene Alias	CBTF, DRBF, DRBP76, MMP4, MPHOSPH4, MPP4, NF-AT-90, NF110, NF90, NFAR, NFAR-1, NFAR2, TCP110, TCP80
Gene Description	interleukin enhancer binding factor 3, 90kDa
Omim ID	603182
Gene Ontology	Hyperlink
Gene Summary	This gene encodes a double-stranded RNA (dsRNA) binding protein that complexes with other proteins, dsRNAs, small noncoding RNAs, and mRNAs to regulate gene expression and stabilize mRNAs. This protein was first discovered to be a subunit of the nuclear factor of activated T-cells (NFAT); a transcription factor required for T-cell expression of interleukin 2. NFAT is a heterodimer of 45 kDa and 90 kDa proteins, the larger of which is the product of this gene. These proteins have been shown to affect the redistribution of nuclear mRNA to the cytoplasm. Knockdown of NF45 or NF90 protein retards cell growth; possibly by inhibition of mRNA stabilization. In contrast, an isoform (NF110) of this gene that is predominantly restricted to the nucleus has only minor effects on cell growth when its levels are reduced. Alternative splicing results in multiple transcript variants encoding distinct isoforms

Other Designations

M-phase phosphoprotein 4|double-stranded RNA-binding protein, 76 kD|dsRNA binding protein
NFAR-2/MPP4|interleukin enhancer binding factor 3|nuclear factor associated with dsRNA|nuclear factor of activated T-cells, 90 kD|translational control protein 80

Disease

- [Cardiovascular Diseases](#)
- [Diabetes Mellitus](#)
- [Edema](#)