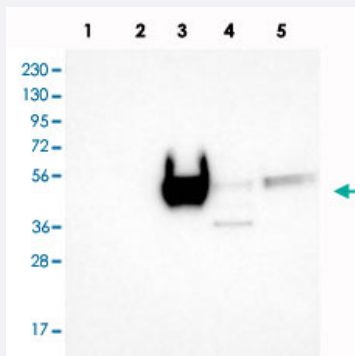


LRG1 polyclonal antibody

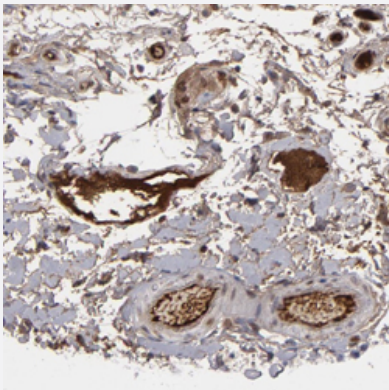
Catalog # PAB28531 Size 100 uL

Applications



Western Blot

Western blot analysis of Lane 1: RT-4, Lane 2: U-251 MG, Lane 3: Human Plasma, Lane 4: Liver, Lane 5: Tonsil with LRG1 polyclonal antibody (Cat # PAB28531).



Immunohistochemistry (Formalin/PFA-fixed paraffin-embedded sections)

Immunohistochemical staining of human colon with LRG1 polyclonal antibody (Cat # PAB28531) shows distinct positivity in plasma.

Specification

Product Description	Rabbit polyclonal antibody raised against recombinant LRG1.
Immunogen	Recombinant protein corresponding to amino acids of human LRG1.
Sequence	TLSPKDCQVFRSDHGSSISCQPPAEIPGYLPADTVHLAVEFFNLTHLPANLLQGASKLQELHLSSN GLESLSPEFLRPVQQLRVLDLTRNALTGLPPGLFQASATLDTLVLENQLEVLVSWLHGLKALG HLDLSG
Host	Rabbit
Reactivity	Human

Form	Liquid
Purification	Antigen affinity purification
Isotype	IgG
Recommend Usage	Western Blot (1:250-1:500) Immunohistochemistry (1:200-1:500) The optimal working dilution should be determined by the end user.
Storage Buffer	In PBS, pH 7.2 (40% glycerol, 0.02% sodium azide)
Storage Instruction	Store at 4°C. For long term storage store at -20°C. Aliquot to avoid repeated freezing and thawing.
Note	This product contains sodium azide: a POISONOUS AND HAZARDOUS SUBSTANCE which should be handled by trained staff only.

Applications

- Western Blot

Western blot analysis of Lane 1: RT-4, Lane 2: U-251 MG, Lane 3: Human Plasma, Lane 4: Liver, Lane 5: Tonsil with LRG1 polyclonal antibody (Cat # PAB28531).

- Immunohistochemistry (Formalin/PFA-fixed paraffin-embedded sections)

Immunohistochemical staining of human colon with LRG1 polyclonal antibody (Cat # PAB28531) shows distinct positivity in plasma.

Gene Info — LRG1

Entrez GeneID	116844
Protein Accession#	P02750
Gene Name	LRG1
Gene Alias	HMFT1766, LRG
Gene Description	leucine-rich alpha-2-glycoprotein 1
Omim ID	611289
Gene Ontology	Hyperlink

Gene Summary

The leucine-rich repeat (LRR) family of proteins, including LRG1, have been shown to be involved in protein-protein interaction, signal transduction, and cell adhesion and development. LRG1 is expressed during granulocyte differentiation (O'Donnell et al., 2002 [PubMed 12223515]).[supplied by OMIM]

Other Designations

1300008B03Rik|2310031E04Rik|leucine rich alpha 2 glycoprotein