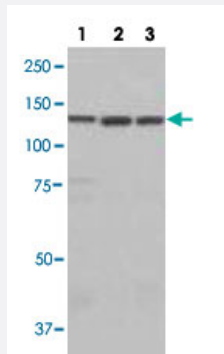


# LARS polyclonal antibody

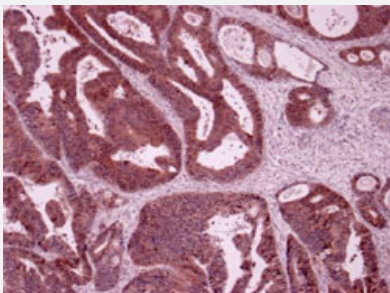
Catalog # PAB28521      Size 100 uL

## Applications



### Western Blot (Cell lysate)

Western blot analysis of lane 1: A549 cell lysate, lane 2: HEK293 cell lysate and lane 3: HeLa cell lysate using LARS polyclonal antibody (Cat # PAB28521).



### Immunohistochemistry

Immunohistochemistry of humen colon cancer with LARS polyclonal antibody (Cat # PAB28521).

## Specification

<b>Product Description</b>	Rabbit polyclonal antibody raised against partial recombinant LARS.
<b>Immunogen</b>	Recombinant protein corresponding to amino acids 930-1176 of human LARS.
<b>Host</b>	Rabbit
<b>Reactivity</b>	Human, Mouse
<b>Form</b>	Liquid

<b>Recommend Usage</b>	Western Blot (1:4000) Immunohistochemistry (1:200) The optimal working dilution should be determined by the end user.
<b>Storage Buffer</b>	In serum (0.05% sodium azide)
<b>Storage Instruction</b>	Store at -20°C. Aliquot to avoid repeated freezing and thawing.
<b>Note</b>	This product contains sodium azide: a POISONOUS AND HAZARDOUS SUBSTANCE which should be handled by trained staff only.

## Applications

- Western Blot (Cell lysate)

Western blot analysis of lane 1: A549 cell lysate, lane 2: HEK293 cell lysate and lane 3: HeLa cell lysate using LARS polyclonal antibody (Cat # PAB28521).

- Immunohistochemistry

Immunohistochemistry of human colon cancer with LARS polyclonal antibody (Cat # PAB28521).

## Gene Info — LARS

<b>Entrez GeneID</b>	<a href="#">51520</a>
<b>Gene Name</b>	LARS
<b>Gene Alias</b>	FLJ10595, FLJ21788, HSPC192, KIAA1352, LARS1, LEURS, LEUS, LRS, PIG44, RNTLS, hr025CI
<b>Gene Description</b>	leucyl-tRNA synthetase
<b>Omim ID</b>	<a href="#">151350</a>
<b>Gene Ontology</b>	<a href="#">Hyperlink</a>
<b>Gene Summary</b>	This gene encodes a cytosolic leucine-tRNA synthetase, a member of the class I aminoacyl-tRNA synthetase family. The encoded enzyme catalyzes the ATP-dependent ligation of L-leucine to tRNA <sup>A(Leu)</sup> . It is found in the cytoplasm as part of a multisynthetase complex and interacts with the arginine tRNA synthetase through its C-terminal domain. Alternatively spliced transcript variants of this gene have been found; however, their full-length nature is not known. [provided by RefSeq]
<b>Other Designations</b>	cytoplasmic leucyl-tRNA synthetase cytosolic leucyl-tRNA synthetase leucine tRNA ligase 1, cytoplasmic leucine translase leucine-tRNA ligase proliferation-inducing gene 44

## Pathway

- [Aminoacyl-tRNA biosynthesis](#)
- [Valine](#)

## Disease

- [Disease Progression](#)
- [Disease Susceptibility](#)
- [HIV Infections](#)