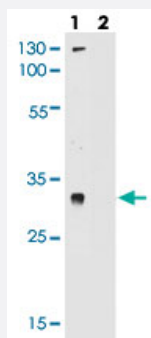


# LOC728137 polyclonal antibody

Catalog # PAB28513

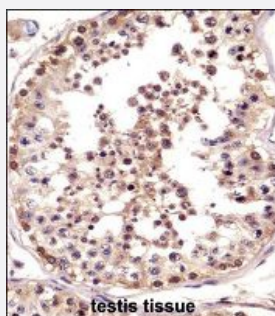
Size 400 uL

## Applications



### Western Blot (Cell lysate)

Western blot analysis of LOC728137 polyclonal antibody (Cat # PAB28513) pre-incubated without (lane 1) and with (lane 2) blocking peptide in LNCAP cell line lysate. LOC728137 (arrow) was detected using the purified polyclonal antibody.



### Immunohistochemistry (Formalin/PFA-fixed paraffin-embedded sections)

Immunohistochemistry (Formalin/PFA-fixed paraffin-embedded sections) of human testis tissue with LOC728137 polyclonal antibody (Cat # PAB28513) followed by peroxidase conjugation of the secondary antibody and DAB staining.

## Specification

<b>Product Description</b>	Rabbit polyclonal antibody raised against synthetic peptide of LOC728137.
<b>Immunogen</b>	A synthetic peptide (conjugated with KLH) corresponding to amino acids 274-303 at C-terminal region at human LOC728137.
<b>Host</b>	Rabbit
<b>Reactivity</b>	Human
<b>Form</b>	Liquid
<b>Purification</b>	Protein A purification

<b>Recommend Usage</b>	Immunohistochemistry (1:10-50) Western Blot (1:1000) The optimal working dilution should be determined by the end user.
<b>Storage Buffer</b>	In PBS (0.09% sodium azide)
<b>Storage Instruction</b>	Store at 4°C. For long term storage store at -20°C. Aliquot to avoid repeated freezing and thawing.
<b>Note</b>	This product contains sodium azide: a POISONOUS AND HAZARDOUS SUBSTANCE which should be handled by trained staff only.

## Applications

- Western Blot (Cell lysate)

Western blot analysis of LOC728137 polyclonal antibody (Cat # PAB28513) pre-incubated without(lane 1) and with(lane 2) blocking peptide in LNCAP cell line lysate. LOC728137 (arrow) was detected using the purified polyclonal antibody.

- Immunohistochemistry (Formalin/PFA-fixed paraffin-embedded sections)

Immunohistochemistry (Formalin/PFA-fixed paraffin-embedded sections) of human testis tissue with LOC728137 polyclonal antibody (Cat # PAB28513) followed by peroxidase conjugation of the secondary antibody and DAB staining.

## Gene Info — LOC728137

<b>Entrez GeneID</b>	<a href="#">728137</a>
<b>Protein Accession#</b>	<a href="#">Q01534</a>
<b>Gene Name</b>	LOC728137
<b>Gene Alias</b>	-
<b>Gene Description</b>	similar to testis specific protein, Y-linked 1
<b>Gene Ontology</b>	<a href="#">Hyperlink</a>
<b>Gene Summary</b>	-
<b>Other Designations</b>	-