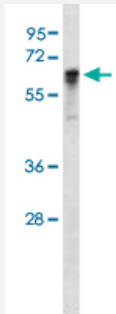


NXF1 polyclonal antibody

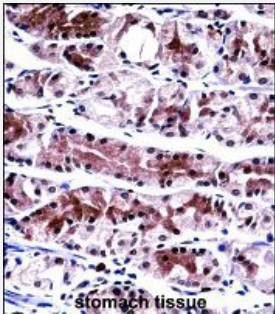
Catalog # PAB28507 Size 400 uL

Applications



Western Blot (Cell lysate)

Western blot analysis of NXF1 polyclonal antibody (Cat # PAB28507) in K562 cell line lysates (35ug/lane). NXF1 (arrow) was detected using the purified polyclonal antibody.



Immunohistochemistry (Formalin/PFA-fixed paraffin-embedded sections)

Immunohistochemistry (Formalin/PFA-fixed paraffin-embedded sections) of human stomach tissue with NXF1 polyclonal antibody (Cat # PAB28507) followed by peroxidase conjugation of the secondary antibody and DAB staining.

Specification

Product Description	Rabbit polyclonal antibody raised against synthetic peptide of NXF1.
Immunogen	A synthetic peptide (conjugated with KLH) corresponding to amino acids 1-30 at N-terminal region at human NXF1.
Host	Rabbit
Reactivity	Human
Form	Liquid
Purification	Protein A purification

Recommend Usage	Immunohistochemistry (1:10-50) Western Blot (1:1000) The optimal working dilution should be determined by the end user.
Storage Buffer	In PBS (0.09% sodium azide)
Storage Instruction	Store at 4°C. For long term storage store at -20°C. Aliquot to avoid repeated freezing and thawing.
Note	This product contains sodium azide: a POISONOUS AND HAZARDOUS SUBSTANCE which should be handled by trained staff only.

Applications

- Western Blot (Cell lysate)

Western blot analysis of NXF1 polyclonal antibody (Cat # PAB28507) in K562 cell line lysates (35ug/lane). NXF1 (arrow) was detected using the purified polyclonal antibody.

- Immunohistochemistry (Formalin/PFA-fixed paraffin-embedded sections)

Immunohistochemistry (Formalin/PFA-fixed paraffin-embedded sections) of human stomach tissue with NXF1 polyclonal antibody (Cat # PAB28507) followed by peroxidase conjugation of the secondary antibody and DAB staining.

Gene Info — NXF1

Entrez GeneID	10482
Protein Accession#	Q9UBU9
Gene Name	NXF1
Gene Alias	DKFZp667O0311, MEX67, TAP
Gene Description	nuclear RNA export factor 1
Omim ID	602647
Gene Ontology	Hyperlink

Gene Summary

This gene is one member of a family of nuclear RNA export factor genes. Common domain features of this family are a noncanonical RNP-type RNA-binding domain (RBD), 4 leucine-rich repeats (LRRs), a nuclear transport factor 2 (NTF2)-like domain that allows heterodimerization with NTF2-related export protein-1 (NXT1), and a ubiquitin-associated domain that mediates interactions with nucleoporins. The LRRs and NTF2-like domains are required for export activity. Alternative splicing seems to be a common mechanism in this gene family. The encoded protein of this gene shuttles between the nucleus and the cytoplasm and binds in vivo to poly(A)⁺ RNA. It is the vertebrate homologue of the yeast protein Mex67p. The encoded protein overcomes the mRNA export block caused by the presence of saturating amounts of CTE (constitutive transport element) RNA of type D retroviruses. Alternative splicing results in multiple transcript variants. [provided by RefSeq]

Other Designations

tip associating protein