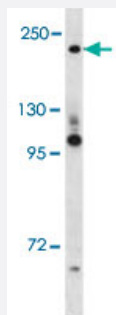


PPL polyclonal antibody

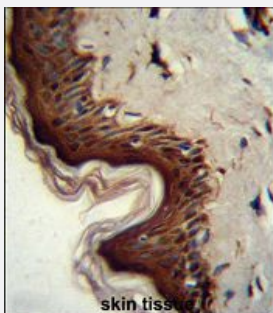
Catalog # PAB28501 Size 400 uL

Applications



Western Blot (Cell lysate)

Western blot analysis of PPL polyclonal antibody (Cat # PAB28501) in T47D cell line lysates (35ug/lane). PPL (arrow) was detected using the purified polyclonal antibody.



Immunohistochemistry (Formalin/PFA-fixed paraffin-embedded sections)

Immunohistochemistry (Formalin/PFA-fixed paraffin-embedded sections) of human skin tissue with PPL polyclonal antibody (Cat # PAB28501) followed by peroxidase conjugation of the secondary antibody and DAB staining.

Specification

Product Description	Rabbit polyclonal antibody raised against synthetic peptide of PPL.
Immunogen	A synthetic peptide (conjugated with KLH) corresponding to amino acids 1301-1330 at C-terminal region at human PPL.
Host	Rabbit
Reactivity	Human
Form	Liquid
Purification	Protein A purification

Recommend Usage	Immunohistochemistry (1:10-50) Western Blot (1:1000) The optimal working dilution should be determined by the end user.
Storage Buffer	In PBS (0.09% sodium azide)
Storage Instruction	Store at 4°C. For long term storage store at -20°C. Aliquot to avoid repeated freezing and thawing.
Note	This product contains sodium azide: a POISONOUS AND HAZARDOUS SUBSTANCE which should be handled by trained staff only.

Applications

- Western Blot (Cell lysate)

Western blot analysis of PPL polyclonal antibody (Cat # PAB28501) in T47D cell line lysates (35ug/lane). PPL (arrow) was detected using the purified polyclonal antibody.

- Immunohistochemistry (Formalin/PFA-fixed paraffin-embedded sections)

Immunohistochemistry (Formalin/PFA-fixed paraffin-embedded sections) of human skin tissue with PPL polyclonal antibody (Cat # PAB28501) followed by peroxidase conjugation of the secondary antibody and DAB staining.

Gene Info — PPL

Entrez GeneID	5493
Protein Accession#	O60437
Gene Name	PPL
Gene Alias	KIAA0568, MGC134872
Gene Description	periplakin
Omim ID	602871
Gene Ontology	Hyperlink
Gene Summary	The protein encoded by this gene is a component of desmosomes and of the epidermal cornified envelope in keratinocytes. The N-terminal domain of this protein interacts with the plasma membrane and its C-terminus interacts with intermediate filaments. Through its rod domain, this protein forms complexes with envoplakin. This protein may serve as a link between the cornified envelope and desmosomes as well as intermediate filaments. AKT1/PKB, a protein kinase mediating a variety of cell growth and survival signaling processes, is reported to interact with this protein, suggesting a possible role for this protein as a localization signal in AKT1-mediated signaling. [provided by RefSeq]

Other Designations

190 kDa paraneoplastic pemphigus antigen|195 kDa cornified envelope|OTTHUMP0000015992
2

Disease

- [Anorexia Nervosa](#)
- [Bulimia](#)
- [Genetic Predisposition to Disease](#)
- [Tobacco Use Disorder](#)