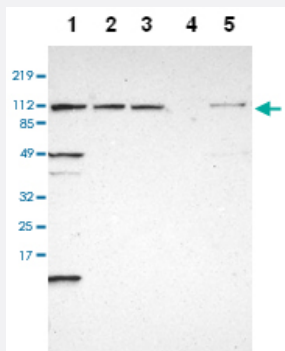


INTS6 polyclonal antibody

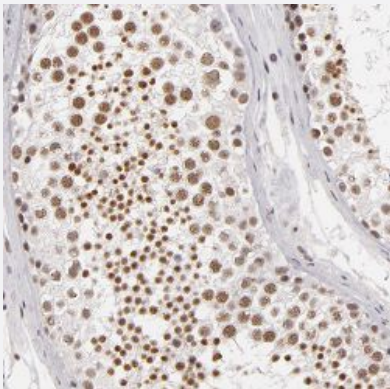
Catalog # PAB28493 Size 100 uL

Applications



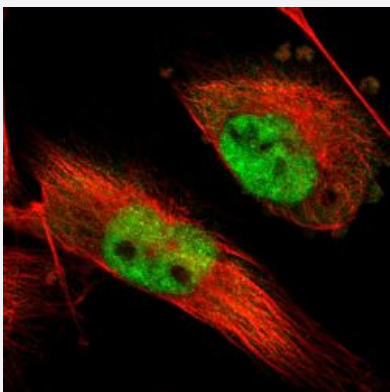
Western Blot

Western blot analysis of Lane 1: RT-4, Lane 2: U-251 MG, Lane 3: A-431, Lane 4: Liver, Lane 5: Tonsil with INTS6 polyclonal antibody at 1:250 - 1:500 dilution.



Immunohistochemistry (Formalin/PFA-fixed paraffin-embedded sections)

Immunohistochemical staining of human testis with INTS6 polyclonal antibody (Cat # PAB28493) shows cytoplasmic positivity in trophoblastic cells at 1:50-1:200 dilution.



Immunofluorescence

Immunofluorescent staining of human cell line U-251MG with INTS6 polyclonal antibody (Cat # PAB28493) at 1-4 ug/ml shows positivity in nucleus but not nucleoli.

Specification

Product Description	Rabbit polyclonal antibody raised against recombinant INTS6.
Immunogen	Recombinant protein corresponding to amino acids of human INTS6
Sequence	VVNNHIGGKGPPAPTTQAQPDLIKPLPLHKISETTNDSSIHDVVENHVADQLSSDITPNAMDTEFSA SSPASLLERPTNHMEALGHDHLGTNDLTVGGFLENHEEPRDKEQCAEENIPASSLNKGKCLMHC RSHEEVNTELKAQ
Host	Rabbit
Reactivity	Human
Form	Liquid
Purification	Antigen affinity purification
Isotype	IgG
Recommend Usage	Immunohistochemistry(1:50-1:200) Western Blot(1:250 - 1:500) Immunofluorescence(1-4 ug/ml) The optimal working dilution should be determined by the end user.
Storage Buffer	In PBS, pH 7.2 (40% glycerol, 0.02% sodium azide)
Storage Instruction	Store at 4°C. For long term storage store at -20°C. Aliquot to avoid repeated freezing and thawing.
Note	This product contains sodium azide: a POISONOUS AND HAZARDOUS SUBSTANCE which should be handled by trained staff only.

Applications

- Western Blot

Western blot analysis of Lane 1: RT-4, Lane 2: U-251 MG, Lane 3: A-431, Lane 4: Liver, Lane 5: Tonsil with INTS6 polyclonal antibody at 1:250 - 1:500 dilution.

- Immunohistochemistry (Formalin/PFA-fixed paraffin-embedded sections)

Immunohistochemical staining of human testis with INTS6 polyclonal antibody (Cat # PAB28493) shows cytoplasmic positivity in trophoblastic cells at 1:50-1:200 dilution.

- Immunofluorescence

Immunofluorescent staining of human cell line U-251MG with INTS6 polyclonal antibody (Cat # PAB28493) at 1-4 ug/ml shows positivity in nucleus but not nucleoli.

Gene Info — INTS6

Entrez GeneID [26512](#)**Protein Accession#** [B3KQH5](#)**Gene Name** INTS6**Gene Alias** DBI-1, DDX26, DDX26A, DICE1, DKFZp434B105, HDB, INT6, Notchl2**Gene Description** integrator complex subunit 6**Omim ID** [604331](#)**Gene Ontology** [Hyperlink](#)

Gene Summary DEAD box proteins, characterized by the conserved motif Asp-Glu-Ala-Asp (DEAD), are putative RNA helicases. The protein encoded by this gene is a DEAD box protein that is part of a complex that interacts with the C-terminus of RNA polymerase II and is involved in 3' end processing of snRNAs. In addition, this gene is a candidate tumor suppressor and located in the critical region of loss of heterozygosity (LOH). Three transcript variants encoding two different isoforms have been found for this gene. [provided by RefSeq]

Other Designations DEAD box protein|DEAD/H (Asp-Glu-Ala-Asp/His) box polypeptide 26|OTTHUMP00000040879|RNA helicase HDB