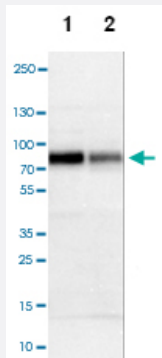


SOX9 polyclonal antibody

Catalog # PAB28483 Size 100 uL

Applications



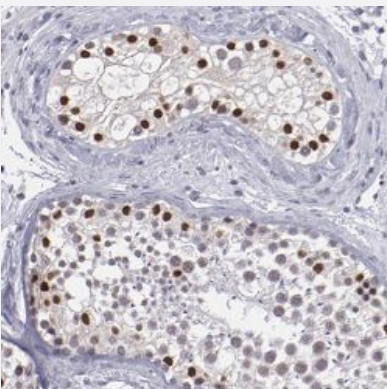
Western Blot (Cell lysate)

Western blot analysis of Lane 1: NIH-3T3 cell lysate (Mouse embryonic fibroblast cells), Lane 2: NBT-II cell lysate (Rat Wistar bladder tumour cells), Lane 3: PC12 cell lysate (Pheochromocytoma of rat adrenal medulla) with SOX9 polyclonal antibody at 1:100-1:500 dilution.



Western Blot (Transfected lysate)

Western blot analysis of Lane 1: Negative control (vector only transfected HEK293T lysate), Lane 2: Over-expression Lysate (Co-expressed with a C-terminal myc-DDK tag (~3.1 kDa) in mammalian HEK293T cells) with SOX9 polyclonal antibody at 1:100-1:250 dilution.



Immunohistochemistry (Formalin/PFA-fixed paraffin-embedded sections)

Immunohistochemical staining of human testis with SOX9 polyclonal antibody (Cat # PAB28483) shows distinct nuclear positivity in cells in seminiferous ducts at 1:200-1:500 dilution.

Specification

Product Description	Rabbit polyclonal antibody raised against recombinant SOX9.
Immunogen	Recombinant protein corresponding to amino acids of human SOX9
Sequence	SQRTHIKTEQLSPSHYSEQQHQHSPQQIAYSPFNLPHYSPSYPPITRSQYDYTDHQNSSSYSHAAG QGTGLYSTFTYMNPAQRPMYTPADTSGVPSIPQTHSPQHWEQPVYQLTR
Host	Rabbit
Reactivity	Human, Mouse, Rat
Form	Liquid
Purification	Antigen affinity purification
Isotype	IgG
Recommend Usage	Immunohistochemistry(1:200-1:500) Western Blot(1:100-1:500) Immunofluorescence(1-4 ug/ml) The optimal working dilution should be determined by the end user.
Storage Buffer	In PBS, pH 7.2 (40% glycerol, 0.02% sodium azide)
Storage Instruction	Store at 4°C. For long term storage store at -20°C. Aliquot to avoid repeated freezing and thawing.
Note	This product contains sodium azide: a POISONOUS AND HAZARDOUS SUBSTANCE which should be handled by trained staff only.

Applications

- Western Blot (Cell lysate)

Western blot analysis of Lane 1: NIH-3T3 cell lysate (Mouse embryonic fibroblast cells), Lane 2: NBT-II cell lysate (Rat Wistar bladder tumour cells), Lane 3: PC12 cell lysate (Pheochromocytoma of rat adrenal medulla) with SOX9 polyclonal antibody at 1:100-1:500 dilution.

- Western Blot (Transfected lysate)

Western blot analysis of Lane 1: Negative control (vector only transfected HEK293T lysate), Lane 2: Over-expression Lysate (Co-expressed with a C-terminal myc-DDK tag (~3.1 kDa) in mammalian HEK293T cells) with SOX9 polyclonal antibody at 1:100-1:250 dilution.

- Immunohistochemistry (Formalin/PFA-fixed paraffin-embedded sections)

Immunohistochemical staining of human testis with SOX9 polyclonal antibody (Cat # PAB28483) shows distinct nuclear positivity in cells in seminiferous ducts at 1:200-1:500 dilution.

Gene Info — SOX9

Entrez GeneID	6662
Protein Accession#	P48436
Gene Name	SOX9
Gene Alias	CMD1, CMPD1, SRA1
Gene Description	SRY (sex determining region Y)-box 9
Omim ID	114290 608160
Gene Ontology	Hyperlink
Gene Summary	The protein encoded by this gene recognizes the sequence CCTTGAG along with other members of the HMG-box class DNA-binding proteins. It acts during chondrocyte differentiation and, with steroidogenic factor 1, regulates transcription of the anti-Muellerian hormone (AMH) gene. Deficiencies lead to the skeletal malformation syndrome campomelic dysplasia, frequently with sex reversal. [provided by RefSeq]
Other Designations	SRY (sex determining region Y)-box 9 (campomelic dysplasia, autosomal sex-reversal) SRY (sex-determining region Y)-box 9 (campomelic dysplasia, autosomal sex-reversal) SRY (sex-determining region Y)-box 9 protein campomelic dysplasia, autosomal sex-reversal

Disease

- [Cleft Lip](#)
- [Cleft Palate](#)
- [Genetic Predisposition to Disease](#)
- [Hypospadias](#)
- [Ovarian Neoplasms](#)
- [Sex determination](#)